

OVERVIEW

FRANKLIN HILLS RESIDENTS ASSOCIATION

ISSUE No. 7

SUMMER 1992

MetroRail

A TRULY BORING STORY

by Bruce Carroll

When Billy Shea, John Kiewit and J.W. Kenny were kids, their moms probably yelled at them for getting filthy while digging in the park. Now that they're contractors, Messrs Shea, Kiewit and Kenny will be getting \$172 million for digging in the park. That's the price tag on the contract approved by the LA County Transportation Commission last month for the Wilshire/Vermont to Hollywood/Highland Red Line subway tunnels that will be bored from beneath Barnsdall Park.

In September, prep work at Barnsdall should be visible, according to Roberta Tinajero of the LACTC. "That's where they start grading the site, paving it, building the shaft, and setting up a lot of large equipment." The six-month process begins by surrounding the site with a chain link fence. Metro Red Line plans to encourage the use of "see through" fencing, even envisioning construction as a tourist attraction allowing the public to see that their money may be going into a hole in the ground it's a worthwhile hole.

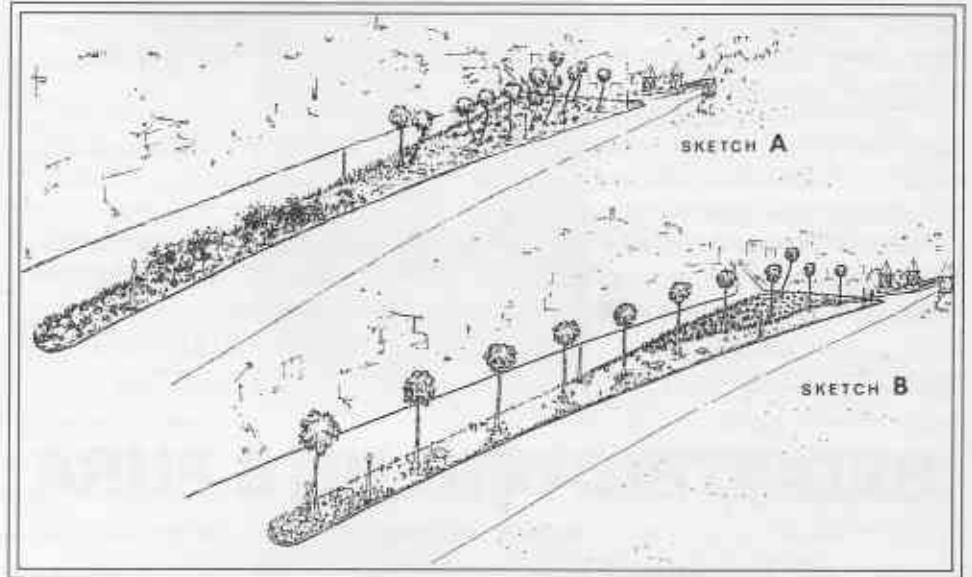
The tunneling equipment won't be lowered into the shaft until March.

See METRO, p. 8

INSIDE:

Redistricting
New Board Elected
Reservoir
Community Phones
My View

page 2
page 3
page 5
page 7
page 12



Two concepts for landscaping of the Franklin Avenue median near the Shakespeare Bridge.

FRANKLIN AVENUE MEDIAN:

A BEAUTIFUL LANDSCAPE

by Riccardo Accorsi

Who's idea was it, anyway? Probably everyone who passes the Franklin Avenue median near Shakespeare Bridge has noticed, consciously or subconsciously, its homely state. The idea of beautifying it may have been on the tip of a few tongues, but not brought to language until lately. Now that the suggestion has actually been made, many of us may feel like we do when we find something long misplaced — a sort of community-wide "of course!"

The Franklin Avenue median was constructed together with the bridge in 1926 and served as a turn-around for those who wished not to cross the bridge. The median has been streamlined several

times since in response to increased vehicular speeds. Its presence has been reduced to a mere strip of (almost) maintenance-free asphalt paving. Having long lost its original beauty, it actually degrades the surrounding context, including the landmark Shakespeare Bridge.

A properly landscaped median will certainly enhance the bridge as well as complete this historic setting in our otherwise charming neighborhood. The Franklin Hills Residents Association proposes to beautify the Franklin Avenue median by landscaping it with drought tolerant plants and trees. The

Please see **MEDIAN**, p. 22

From the President

Since our Spring issue on crime and what we can do about it, our community has been affected by the May riots. Several of "our" stores were looted and there were fires nearby. We had a graphic representation of how our public services (fire, police) can be quickly overloaded by such events and how important it is for each of us to be self-reliant. Now, in past weeks, we have experienced several earthquakes of major intensity. Have these events given you a "wake up call?" Were they enough to convince you: 1) that you are self-reliant and prepared for anything, 2) to leave town, or 3) that you should get yourself and your family prepared for a disaster that could come at any time?

If your answer is 3), then you owe it to yourself to be at our next meeting — August 12 at Marshall High School. On hand will be special Disaster Preparedness experts from the Fire and Police Departments to give you the information you need.

This will be our first general meeting of the 1992-93 year and we hope to have four. Others being contemplated are another meeting with representatives from L.A.P.D. on the crime and gangs issue and a possible candidates forum prior to the November elections.

If you have ideas for other meeting topics or projects you think we should be involved in, please call our new FHRA HOTLINE 664-7247. Your call will be returned by the appropriate board member or committee head.

— DON WALDROP

REDISTRICTING HITS FHRA

by Don Waldrop

Political connections for a grass roots organization such as the Franklin Hills Residents Association are an extremely important asset. Our connections have grown in increments since the early skirmishes with proposed development of the private school property in the area below the Shakespeare Bridge and with our concern about ABC-TV's projected growth plan (which came to our attention after a huge building was erected on the lot in 1987.)

The support given FHRA by Council Michael Woo and his staff has been immense. Deputies Dianne Breuggemann, Carole Joseph, Jan Perry and Kathy Godfrey have been very responsive and involved in nearly aspect of this group's interests. When information was needed, they supplied it. When we needed support on issues, they were there — able to call the right people or do the right thing for us, and always with Mike Woo's knowledge and guidance.

On the other hand, we had just gotten to know Assemblywoman Barbara Friedman. Her campaign in our area was intensive, with many one-on-one discussions of community concerns. She was elected out of an incredibly strong group of candidates, any one of whom would have been an effective representative, and we were happy to have her on our side, knowledgeable, dedicated and interested in our issues.

So what happens? They are both no longer our representatives due to the political process called *redistricting*. And, while the redistricting process may be an appropriate way of ensuring proper minority representation, this process effectively destroys the political connections and friendships carefully built up over the years, leaving us to forge new alliances and develop mutual respect.

Our new Councilman, City Council President John Ferraro, has long been a major figure in City politics and we look forward to working with him and his staff.

See **REDISTRICTING**, p. 9

FRANKLIN HILLS RESIDENTS ASSOCIATION

BOARD OF DIRECTORS

President

DONALD WALDROP

Vice President

BRYANT CROUSE

Secretary-Treasurer

BRUCE CARROLL

RICCARDO ACCORSI

CHRIS BOUTELLE

GENE CORNELL

CAROL MASON

CHARLEY MIMS

ARNIE NETKA

VIOLET WEBER

FRANK YOGUS

ACTION TEAM LEADERS

ABC-TV & COMMUNITY:

Don Waldrop, 664-4124

CRIME & N'BORHOOD WATCH:

Violet Weber, 663-6427

DISASTER PREPAREDNESS:

Violet Weber, 663-6427

ENVIRONMENTAL:

Marcelle Zonta, 664-4124

GRAFFITI:

Isabel Dietz, 661-4531

L. I. L. A. (French American School):

Don Waldrop, 664-4124

MEDIAN:

Riccardo Accorsi, 666-2431

MEMBERSHIP:

Gene Cornell, 663-2533

METRO RAIL:

Bruce Carroll 665-9875

NE-TACC:

Patti Harrison, 662-8709

PLANNING & ZONING:

Charley Mims, 665-8239

Franklin Hills OVE RVIEW

Publisher: Don Waldrop

Editor: Carol Mason

Contributing Writers:

Riccardo Accorsi, Bruce Carroll,

Barbara Dakin, Isabel Dietz,

Lynne Hill, Violet Weber.

Editorial and Advertising Sales:

(213) 664-4124

The Franklin Hills OVERVIEW is published on an occasional basis. We invite your comments on matters relating to articles and the community and, space permitting, will publish letters mailed to Editor, OVERVIEW, Box 29122, Los Angeles, CA 90027

1992 FHRA Directors Elected in May

Who Are Your Board Members?

by Isabel Dietz



Riccardo Accorsi, beginning his first term on the Board of FHRA., is an independent architect and specializes in residential design. He and his family have lived in Franklin Hills since 1987. His wife, Lise McKenna, is a social worker and they have two children, Sancho, age four, and Luisa, age two. Riccardo loves to cook. "I enjoy making great food, although our kitchen is tiny. I also like

gardening about twice a year with my favorite tool—the rake." In addition, he is a musician and has a small home studio where he performs and records multi-instrumental tracks of guitar, piano and bass. Riccardo is currently involved in planning the landscaping of the median on Franklin Avenue just west of the Shakespeare Bridge.



Chris Boutelle, a returning Board member, has lived here for eleven years and works in the entertainment industry as a key grip. He loves the neighborhood for its views, atmosphere and diversity, and has participated in neighborhood activities for years, beginning with the Neighborhood Watch when it was first formed. He has painted out his share of

graffiti and was the sole graffiti eradicator on the Franklin Avenue Bridge before Phil Lyon took on the job. Chris is Search and Rescue Team Leader in the Disaster Preparedness program and has taken the training twice. Chris enjoys

improving his hillside landscaping and is a bountiful source of information on retaining walls and planting.



Bruce Carroll (Secretary/Treasurer) was born just five blocks from the Franklin Hills, but didn't have the good sense to move here until 1970. In 1976, he bought property across the street from his home and cut down a tree to improve his spectacular view. Having planted a dozen fruit trees on the lot, he says, "It's my farm." When not weeding or harvesting, Bruce's other

interests since retiring as a producer for ABC News include tinkering with busted old electronic things. Bruce became active with FHRA by volunteering to keep the membership list. An admittedly frugal fellow, he became FHRA Treasurer in 1991, and added Secretary this year. Additionally, as may have been noted on these pages, he is Overview's resident curmudgeon.



Gene Cornell is a new Board member this year. He has background in industrial engineering and experience as an efficiency expert. He started a school called the Cornell Institute, where he holds classes in various subjects related to communication skills, principles of scientific observation, development of personal values and the use

of logic in problem solving. He is interested in the stock market and has developed some new investment concepts.

JOIN FHRA — See page 23 for Details and Membership Form

Board, from p. 3

Gene's hobbies are golf, tennis, reading, and entertaining (he is a singer) at various charity events and at parks and recreation centers.



Bryant Crouse (Vice President) returns to the Board this year for his third term. He received his undergraduate degree in psychology from Princeton and has a Ph.D. in clinical psychology from UCLA. He has been a practicing psychotherapist, an organizational development consultant, and now he is an executive recruiter for the entertainment industry. Bryant has

lived in the Franklin Hills since 1984. Very active in the community, he works on the Nominating, Planning and Development, and Membership Committees of FHRA. Bryant's leisure interests are tennis, jogging, movies and theater. He urges anyone with ideas for new projects for FHRA to get in touch with him at (213) 666-0307

Charley Mims, who is a Los Angeles native and has lived in this general area for twenty two years, is beginning his second two-year term on the Board. He is a Division Head in the Department of Public Works, Los Angeles. With a twenty-five year career as a city employee, he knows a great many people in city government and has been an

invaluable source of information to Board members seeking resolution of various neighborhood problems coming under the jurisdiction of city or county government. Charley and his wife, Ardelle, are famous in the neighborhood for having won the annual FHRA croquet match and receiving a trophy at the same time for the most appropriate dress for the occasion.



Arnie Netka, a seventeen-year resident of Franklin Hills, was born, raised and received all his schooling in the Bronx. Before coming to Los Angeles in 1971, he taught elementary and junior

high school in New York for four years. He has been Director of Purchasing for the Port of Los Angeles since 1983. His wife, Suzanne, is a first grade teacher at Franklin Elementary School and they have two daughters, Danielle, age fifteen, and Brooke, age twelve. He says, "I like to camp, fix things around the house (often breaking them first so that I can fix them later), and shop (since I do it as a profession)."



New Board member, **Carol Mason**, has been active with the Association in many ways since its inception. She has worked with Vi Weber on the Disaster Response Program and is Fire Captain of the FHRA Disaster Response Team. She also serves

as the ruthless copy editor of the *Overview*. A native of Los Angeles, Carol has lived in the Franklin Hills area for five years. Recently, she parlayed a ten-year career in computer sales and marketing into her own business as a free-lance writer. An amateur astronomer and Egyptologist, her friends also say she is a great dancer and a good shot.

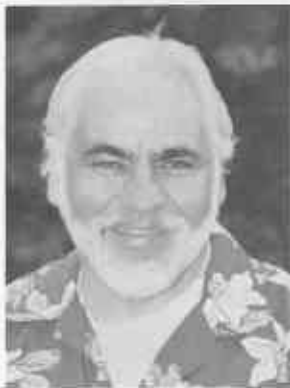


Violet Weber, who is beginning her third year as a Board member, has lived in the Hills since 1965. She has a home-based business – a fashion export service, advising out-of-country clients who need help in selecting American fashions. Previously, she was the Fashion Editor and Home Furnishings Editor of Home Magazine for the Los Angeles Times for fifteen years. She would like to see a greater participation of residents in the activities of FHRA. Says the ebullient Vi, "I wish people would be more cognizant of the fact that they don't just live in a house, they live in a neighborhood. Vi has been Director of the Disaster Preparedness Program for Franklin Hills, which means she is responsible



Board, continued

for the training and mobilization of literally hundreds of people for emergency response in our area.



Don Waldrop (President) is a founder and the chief instigator of the FHRA which was formed about four years ago when there was concern about ABC Studio's proposed expansion. Shortly after these issues arose, the administration of the Los Feliz Hills School solicited the neighborhood for help with some of their problems. Don led the Association through the thorny but successful resolution of both sets of issues.

His untiring diplomacy and persistence in the face of obstacles as well as his mastery of detail paid off. Don is a professional studio musician, performing background scores for films and TV. He performs in and manages a chamber music group, Los Angeles Brass, which tours nationally. His wife, Marcelle Zonta, is a former opera singer with credits from Los Angeles Music Center Opera, Opera A La Carte and Metropolitan Opera National Company. They have lived on Hollyvista in the same house for twenty-two years with a gaggle of Siamese cats.



Frank Yogus joins the Board this year as a new member after living on Ronda Vista for nine years. He has a financial consulting business and a wholesale travel company specializing in destinations in the South Pacific. One of his long-term interests has been child welfare and services for abused and neglected children. He is on the Board of Directors of Children's Hospital, Long Beach;

the Board of Trustees of Children's Hospital, Los Angeles; and holds a national office with Save the Children Foundation. He is very concerned with issues of homelessness, and serves on the Board of LAMP, the mayor's task force for the homeless. He loves to travel. "I've been everywhere—especially to remote corners of the world".

Isabelle Anderson Dietz is a former FHRA Board member. She is a visual artist and freelance art reviewer who has lived in the "dales" of the Franklin Hills area since 1978. Isabel shares her home with her husband Bill, a product designer, and Yoti, an animal companion who is a full-time dog.

ROWENA RESERVOIR

by Lynne Hill

Follow St. George Street from the charming and historic Shakespeare Bridge, past the magnificent and historic John Marshall High School, and you'll find the beautiful and historic Rowena Reservoir.

NOT!

Rowena, which is visible to many Franklin Hills residents and has long been a local landmark, is the oldest remaining open reservoir in the city's water system, having been built in the late 1800's and last modified in 1942. But last January, the reservoir was drained because of ongoing seismic problems. Since then, residents of the surrounding neighborhood have been looking at a dusty ten-acre hole in the ground.

For the past three years, the community has been actively trying to preserve the reservoir. But the DWP — citing water quality problems and new state laws mandating covers on reservoirs — has resisted all efforts to restore the site.

Instead of rebuilding the reservoir, however, the DWP has entered into negotiations with community representatives to find a solution for the site that will meet the department's needs while preserving the aesthetic value of the area. Specifically, the department has plans for a ten-million gallon water tank. But DWP officials have tentatively agreed to bury the tank, and enhance the site with landscaping and shallow water features.

It will be several years before the project is underway. In the interim, the DWP has agreed to mitigate the eyesore by filling the empty reservoir bed with potted trees (supplied free of charge by the LA Conservation Corps) and hydro-seeding the sides. They have also agreed to begin planting some of the permanent landscaping as soon as possible.

This is part of a larger mediation effort that involves communities with other open reservoirs, like Silverlake and Lake Hollywood, which are also threatened by DWP projects. Only ten open water reservoirs remain in Los Angeles, and those fighting to save Rowena have joined a larger advocacy group, the Coalition to Preserve Open Reservoirs, which represents more than 350,000 people citywide. The Coalition is mediating with the DWP to develop strategies that would satisfy the department's water storage needs, while preserving the beauty of LA's open reservoirs.

It is the first time that the DWP has been responsive to community concerns on this issue. Public meetings will be held to present the design plans. We will need to show neighborhood support for these plans in order to make them a reality. In these tight fiscal times, we are still faced with the threat of unadorned concrete tanks and or filtration plants. A strong community turnout at all public meetings is the only way to convince the DWP and the City Council that the sites are worth saving.

Anyone interested in the issue may contact Molly or Michael Collins at 662-7159 or Lynne Hill at 664-2332.

Disaster Preparedness:

NOW MORE THAN EVER

By Vi Weber, Chair
Disaster Preparedness Committee

EARTHQUAKES and RIOTS! One strong lesson to be learned from recent events is that our neighborhood could be without emergency services for several days after a disaster. **WE MUST PLAN TO TAKE CARE OF OURSELVES.** The French American School (formerly Los Feliz Hills School) has made their grounds available as an emergency staging area. The Franklin Hills Disaster Response Team now has a place to store equipment, medical supplies, food and water to help you and your family in the aftermath of a disaster.

This is a call to all Franklin Hills residents to bring any of the following items or make a cash donation at the Disaster Preparedness Meeting on August 12, 1992 at the French American School. You may also mail a cash donation right now, made out to: **Franklin Hills Residents Association, Disaster Response Fund, P.O. Box 29122, Los Angeles, CA 90027.**

Blankets	Large trash cans w/covers
Tarps / Plastic Sheets	Buckets (covered if possible)
Flashlights & batteries	Small plastic bags with ties
Radios & batteries	Large plastic bags with ties
Fire extinguishers	Powdered chlorinated lime
Garden hoses	Chlorine bleach
Axes / pickaxes	Bar soap
Crowbars	Paper towels
Bolt cutters	Can openers
Wire cutters	Toilet paper
Electrical tape	Camp stoves
Saws (hand & power)	Cans of sterno
Crescent wrenches	Pots and pans
Jacks	Canned food
Rope	Pet food
Shovels & spades	Granola or candy bars
Portable generators	Paper plates and utensils
Candles & matches	Powdered milk
Heavy duty gloves	Dried meats & fruits

For Additional Information: Violet Weber, (213) 663-6427

needs & wants

LOS FELIZ LIBRARY

Volunteers are needed for a tutorial program, estimated time per week: 2-3 hours.

Donations needed: Books and videos to sell, patio furniture, indoor plants and watering can, outdoor planters and plants.

Contact: Thea March, Los Feliz Library, 1939 1/2 Hillhurst Avenue, (213) 664-2903

TRASH CANS

Unneeded trash cans - plastic, metal, large, small - for recycling program on the Marshall High School campus. So far we have had over 30 donated and can still use more. If you are on the Los Angeles City Recycling Program and have old cans sitting around, please send them our way. We'll put them to good use. Call 413-4221 or 664-7247 for pick-up or more information.

TUTORS

Volunteers to tutor little kids or big kids, in reading, math or writing skills. Community tutoring corps are forming now. If you want to help a youngster succeed in life, call 413-4221 or 664-7247 NOW!

JOBS / APPRENTICESHIPS

If you need help in your business or home and are willing to employ, train or apprentice local teenagers, call 413-4221

• **community phones** •

IMPORTANT COMMUNITY PHONE NUMBERS

ABC-TELEVISION:

John Yingling, Plant Manager, (213)557-5000
Security: 557-5354.

CITY ANIMAL REGULATION: 222-7138

COUNCILMAN JOHN FERRARO:

Room M-30, City Hall, 200 Spring St., (213) 485-3337
District Office, 625 S. New Hampshire (213) 485-4377

ENVIRONMENTAL:

Recycling: 1-800-CITYSAN

Rebate for Ultra Low Flush Toilet installation (\$100).

(213) 481-5800; (800)-722-1122. (Back in effect now)

Rebate for Super Efficient Gas Water Heater (\$200).

(800) 852-9820

Hazardous Waste Hotline (213) 237-1634

FIRE DEPARTMENT: Emergency 911;

Non-emergency: 485-6235;

GRAFFITI:

On private property: (213) 253-2687

On public property: (818) 772-7753

FHRA Graffiti ActionCoordinator: 661-4351

LOS FELIZ PUBLIC LIBRARY: (213) 664-2903.

Hours: Mon & Tues 12:30-8; Wed & Thurs 12:30-5:30; Fri & Sat 10-5:30.

PARKING ENFORCEMENT DISPATCH: (818) 904-1418

POLICE: Emergency 911;

Northeast Division: Non-emergency (213) 485-2563

RECYCLING INFO: (800) CITY SAN

SANITATION: 485-4906

STREET LIGHTING: 482-5483

STREET MAINTENANCE: 485-5661

TELECOMMUNICATIONS (TV Cable service) 485-2751

TRASH RECEPTACLE INFO: (800) 248-9726

WATER & POWER: Hot Line (800) 722-1122

WE'VE GOT (Y)OUR NUMBER

The Franklin Hills Residents Association is proud to announce that we now have our own telephone number. By calling (213) 664-7247, you can leave messages for board and committee members, make suggestions, or ask questions.

It's not exactly a "hotline," and getting an "800" number didn't seem to make much sense, so we hope you find our plain old neighborhood number useful.

The only problem with 664-7247 is that, so far, we haven't figured out anything clever and meaningful that it might spell. We missed by one digit getting the initials FHRA. To remedy this problem, we will offer anyone who decodes the right hidden message in 664-7247 a first edition Franklin Hills T-shirt.

FHRA HOTLINE (213) 664-7247

EQ - CALL HOME

The Disaster Preparedness Response Team is attempting to coordinate all types of emergency communication equipment in the event of a major earthquake or other disaster.

Owners of car phones, amateur ham radios, CB radios or walkie-talkie radios who would be willing to offer their support and expertise are asked to contact Jay Glassman at 663-3446

GRAFFITI ALERT

Plans are being made for another FHRA community paint-out, to be held in August. If you would like to be involved or if you know of a trouble area, call Isabel Dietz: 661-4351.

They Are "Our" Businesses

Traveling to other areas to shop has become troublesome now that the population and traffic have increased so much. The businesses that have shown interest in reaching you and your neighbors by advertising in this locally produced, hand distributed newsletter are charged the absolute minimum possible advertising fees. Their ads pay for the paper and any surplus goes to FHRA. Please support our advertisers by utilizing their services regularly and, by all means, tell them you saw their ads in the "Overview."

METRO, from p. 1

Maybe engineers are counting on heavy rains, like we've had the last two Marches, to sort of ease or ooze the huge machines down about 70 feet below the surface.

At that time, the entrance to Barnsdall Park will be moved to what is now the Hollywood Hand Car Wash. But owner Murray Braun complains, "we have not received any offer yet, we haven't received any written documentation, nothing." As to when the car wash will close, "I have no idea." He did stop giving out coupons two months ago, however.

By consolidating the excavation at

Barnsdall the LACTC estimates they'll save about \$7 million, and countless inconveniences to the public and local businesses that would have been caused by earlier plans for three tunneling sites. Despite all the digging, there won't be a station at Barnsdall.

The closest place for Franklin Hills residents to catch Red Line trains will be the northeast corner of Sunset and Vermont. "It's going to be a plaza that will serve the whole hospital district." According to Ms. Tinajero, "They've come up with a very nice plan that improves the area for pedestrians. It makes it a friendly place to walk through."

A friendly place to walk, but what about parking for area residents who might not want to walk a mile for a Camel or a subway? "There aren't park and ride lots for the Red Line. It's really designed to motivate people to try new means of transportation."

AN ODE TO PROGRESS

When MetroRail builders say *new*,
What they really mean is your shoe.
To cut the pollution,
That is one solution,
But will it attract me and you?

FRANKLIN HILLS RESIDENTS ASSOCIATION

**HOTLINE:
(213)
664-7247**

BOOKS PLUS

your new neighborhood
book store

THE BEST SELECTION OF PAPERBACKS
& MAGAZINES YOU'LL EVER FIND

Next to Video Journeys
2724 Griffith Park Blvd
(213) 660-6035

MISTO Los Feliz

RESTAURANT AND ART GALLERY

Misto: a mixture of the cuisines of Italy, the
American Southwest and the Caribbean

2064 Hillhurst Avenue • Los Feliz Village
(213) 667-1357



VIDEO JOURNEYS

Largest videotape and
laser disc selection in
Los Feliz and Silver Lake

2728 Griffith Park Boulevard - (213) 663-5857

BAYLESS CHEVRON SERVICE

AT FRANKLIN & HILLHURST
OVER 60 YEARS OF SERVICE TO
FRANKLIN HILLS

TED BAYLESS 665-9837

BALLER HARDWARE

2505 HYPERION AVENUE
(213) 665-4149

ROOS ON EDUCATION

The Silver Lake Improvement Association will hold a forum on "Educational Reform in the Los Angeles Unified School District" on Thursday, July 30, at the Russian Church Meeting Hall, 650 Micheltorena.

Mike Roos, former 45th District Assemblyman and current President and CEO of LEARN (The Los Angeles Educational Alliance for Restructuring Now) will present the recommendations of LEARN's seven task forces, composed of more than 200 representatives of virtually every group concerned with education and the welfare of Los Angeles youth, on how to provide a more effective system of governance, hold students accountable for performance and to accurately assess the performance of students. After Mr. Roos's presentation, a question and answer period will commence. Call 413-4221 for more information.

REDISTRICTING, from p. 2

His area deputy, Tom La Bonge, has been an important and effective link between his office and the Los Feliz Improvement Association to our north. They have worked together in a positive way on numerous issues, many of which have affected our area as well. Ferraro's planning deputy, René Weitzman, is a knowledgeable force in zoning and development and we look forward to working with her on local issues.

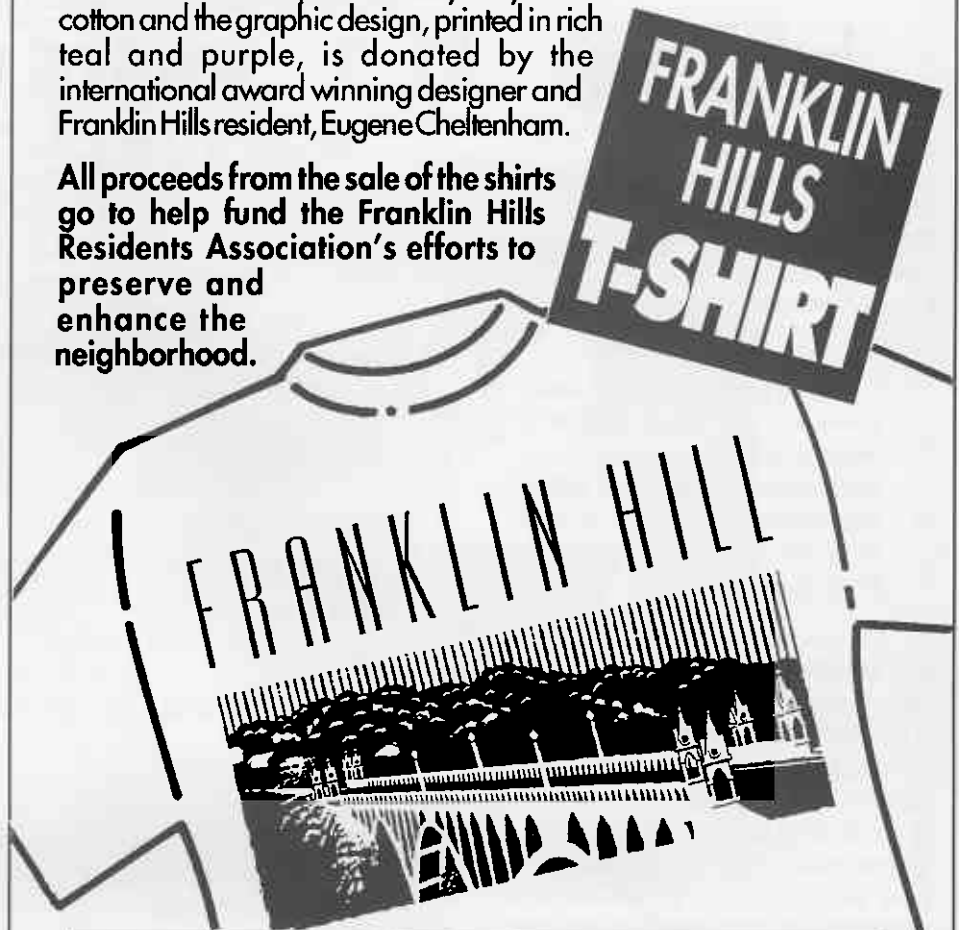
Our new State Assemblyman, Pat Nolan, has until now represented a largely Republican district which includes Atwater, Glendale, Burbank and Toluca Lake. He has acquired our heavily Democratic area west of the Golden State Freeway in this recent Assembly redistricting and it will be interesting to observe how he will respond to our interests and support our causes.

And finally, State Senator David Roberti, a long-time resident of Los Feliz, lost his entire district to Senate redistricting. With his term limited by a new law to only two more years, Senator Roberti, chose to run for a San Fernando Valley seat vacated by former Senator Alan Robbins.

You'll be proud to wear this t-shirt with its classically designed graphics that show the Shakespeare Bridge and a silhouette of our historic Franklin Hills.

The t-shirts are a crisp white heavy-duty 100% cotton and the graphic design, printed in rich teal and purple, is donated by the international award winning designer and Franklin Hills resident, Eugene Cheltenham.

All proceeds from the sale of the shirts go to help fund the Franklin Hills Residents Association's efforts to preserve and enhance the neighborhood.



ORDER FORM

1 T-SHIRT
\$12.00 (Plus sales tax \$.99)

2 T-SHIRTS
\$22.00 (Plus sales tax \$1.82)

3 T-SHIRTS
\$30.00 (Plus sales tax \$2.48)

MAIL TO: Franklin Hills T-Shirt, P.O.
Box 29122, Los Angeles, CA 90027

MAKE CHECKS PAYABLE TO:
Franklin Hills Residents Association.

(Do not send cash.)

T-shirts subject to availability.

Please allow 2 to 4 weeks for delivery.

NUMBER OF SHIRTS			PRICE	
M	L	XL		
			SALES TAX	
			POSTAGE & HANDLING	\$2.00
			TOTAL	

NAME _____

ADDRESS _____

APT. _____

CITY _____

STATE _____

ZIP _____

PHONE _____

FRANKLIN HILLS RESIDENTS
ASSOCIATION MEMBER?:

YES
NO

T-shirts printed by Hollywood Graphitee - (818) 776-8044

AN OPINION:**L. A. TIMES
CRIME LOG**

Do you subscribe to the Los Angeles Times and do you read CRIME LOG in the Glendale section on Thursdays? On July 2, under Los Feliz, the following information was printed:

Clayton Avenue, 3800 block — The front door of a home was kicked in by thieves who stole a stereo and video equipment valued at \$3,800 between 8:30 a.m. and 10:00 p.m., June 26.

Do you feel, as the editors do, that this is giving away too much personal information about the residents that were robbed? Would not the basic information about the general location and the method of crime be sufficient? Why should it be announced to the general public that someone in that block may be replacing \$3,800 of stolen property with new, updated electronics and they will most likely be away from home on weekdays after 8:30 a.m.?

If you feel as we do, please address your opinion to:

Editor, Glendale Section
Los Angeles Times
130 N. Brand Boulevard, Suite 305
Glendale, CA 91203



HOUSEHOLD HAZARDOUS WASTE ROUNDUP DON'T LET L.A. GO TO WASTE

Throwing away household chemicals with the regular garbage or throwing them down the drain damages our environment and is against the law.

Household chemicals in your home can also pose a threat to you and your family. Let the City of Los Angeles Bureau of Sanitation dispose of these chemicals properly.

They will accept
**HOUSEHOLD CLEANERS, AUTOMOBILE PRODUCTS,
PESTICIDES, PAINT, OUTDATED MEDICINE, etc.**

The following regulations apply to this event:

- It is illegal to transport more than 5 gallons or 50 pounds of hazardous waste.
- Please do not bring empty containers or dried-up paint.
- Please transport waste in a cardboard box
- Keep all materials away from passengers during transportation
- Keep products in original containers.
- Do not mix products.
- Waste from businesses will not be accepted
- Make sure containers are leakproof; if they are not, place them in larger leakproof containers.
- No radioactive materials, compressed gas cylinders, infectious waste, explosives or ammunition. No business waste
- DRIVE-THROUGH ONLY; no walk-ins. L.A. residents only
- Please stay in vehicle while at the Roundup

JULY 18, 1992

9:00 A.M. TO 3:00 P.M.

LOS ANGELES VALLEY COLLEGE

5800 Fulton Avenue, Lot B, Van Nuys

FURTHER INFORMATION: (213) 237-1634

NOTE: Heavy rain will postpone the event one week.



MY VIEW

By Bruce Carroll

LOOKING OVER THE FENCE

As someone famous once said, "the best offense is a good defense."

But increasingly in our city it seems property owners feel the best defense is an offensive fence. Without a variance, any front yard fence is an offense if it's over 3 1/2 feet high. Many think such offending defensive fences will protect their valuables from other "fences" the kind who deal in stolen goods.

Since FHRA is not an organization that likes to sit on the fence, we went to City Hall last fall for some verbal fencing and won a less offensive fence in a particular dispute. You've probably passed it numerous times. It's on the western edge of the Franklin Hills at 1400 Talmadge, between Fountain and Sunset Drive. "It" is a boxy, eight-unit apartment building that now wraps around a stately old house.

This project had been underway for some time when FHRA got word of the developers' request for a variance so they could protect their architectural masterpiece with a six-foot-high concrete and wrought iron fence.

At the hearing, the FHRA argued that structures such as



Gary (with the hood) and Mike Tavasanci install iron work while NOT whistling "Don't Fence Me In."

the one planned, with six-foot-high concrete block side walls and plain wrought iron across the front property line, make residential streets look like prison compounds. The developer countered with the need for security in order to rent the apartments and puzzled over why we should care since we didn't live on that block. The lady next door liked the high side wall, hoping it would protect her from noisy, nosy new neighbors. An architect sent a letter protesting that allowing such walls "contributes to the piecemeal degradation of [the] urban environment." Associate Zoning Administrator, Albert

CONTINUED next page

ART-n-Barbee

2070 North Hillhurst Avenue
(213) 660-5145

BBQ and AFRICAN FOOD
ART GALLERY
POETRY and LIVE MUSIC
11:00 a.m. to 10:00 p.m.
Delivery - Catering

(sweet potato cheesecake & peach cobbler)

Irv Weiss

(213) 665-5841

Realtor - Senior Consultant

FRANKLIN HILLS RESIDENT FOR OVER 30 YEARS

2150 HILLHURST AVENUE
LOS ANGELES, CA 90027



bella bella

a beautiful boutique

Don't waste a moment driving
when you can shop in
the neighborhood

2066 hillhurst avenue
los feliz village • 662-7747



Glenn Patterson

Realtor®

Franklin Hills resident for 12 years
Ask me about guaranteed sale programs

660-9200

ERA® Kashu Realty



My View, continued

Landini obviously had taken his Solomon pills that day. He decided that, given the atmosphere (or maybe that should be atmosFEAR) in the city, an extra 2¹/₂ feet on a fence was not too much to ask, but did it need to be so ugly? He even questioned whether the design was sturdy enough to stand up for very long.

Mr. Landini turned over the thick file and sketched his idea of a better solution — one with decorative pilasters to support the wrought iron, and more importantly, one that would have to be set back from the sidewalk by 18 inches. Hoping to make sure that it would not become 18 inches of old beer cans and newspapers, Mr. Landini required landscaping and an automated irrigation system be installed before final approval by the Department of Building and Safety.

In the end, even fishes wishes were considered. The developers got a sturdier defensive fence. The community got a less visually offensive fence. And Mr. Landini, as required by law, determined the project "will not have an impact on fish and wildlife resources."

HOME ALONE?

Your neighbors in Franklin Hills care about you and your well-being. If you are elderly, ill or disabled, a friendly phone call each day can mean a lot.

A support network is being set up right now: Call Vivienne at 662-8532.



We make you look good . . . on paper!

HARD COPY
and
Laser Printing
COPY COPY COPY

COPIES
OVERNIGHT

As Low As

3¹/₂¢

NO LIMIT

CANON
COLOR COPIES

89¢_{ea.}

offer 1st copy,
same original, no changes

OPEN
MON - SAT
9 - 6

1870 N. VERMONT
(AT FRANKLIN)

FREE PARKING IN REAR

Carolyn's Restaurant

AND CATERING SERVICE

A Unique International Restaurant & Cafe Offering
Something Special To All Five Senses

Taste EUROPEAN & AMERICAN
HEALTHY DISHES AT
REASONABLE PRICES

Sight NEW WORKS OF ART BY
NEIGHBORHOOD ARTISTS
ON DISPLAY (6 to 8 weeks)

Sound BACKGROUND JAZZ
& BLUES MUSIC

Smell THE AROMA OF FRESH
GARLIC & HERBS FROM
AROUND THE WORLD

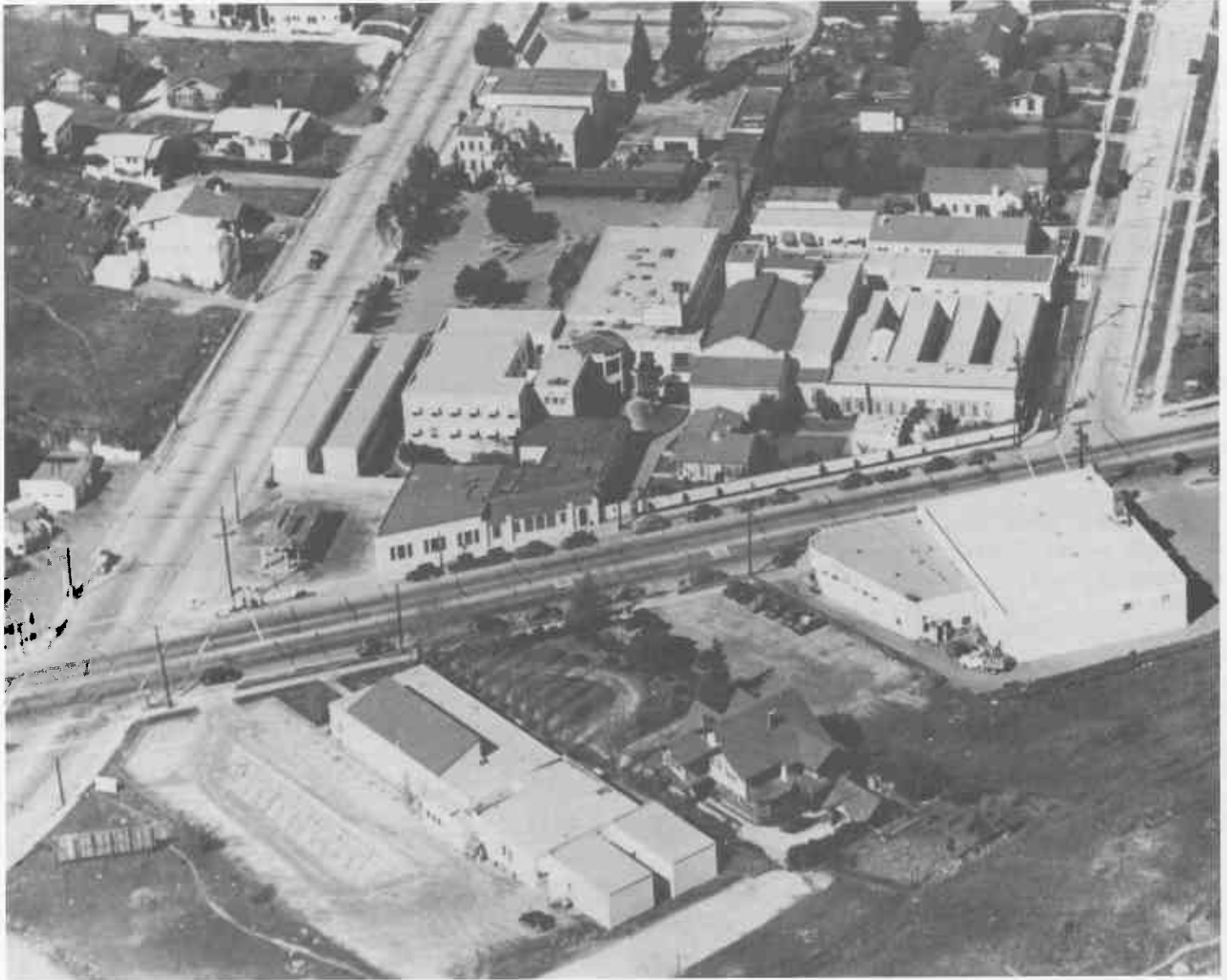
Touch THE AURA OF FRIENDLINESS
& BEING FAMILY THAT GREETES
YOU AT THE DOOR

Complete dinner
Nothing Over \$8.50

Fresh Quiche • Salads & Soups • Lucious Desserts
Ice Creams • Full Espresso & Cappuccino Bar
Sandwiches • Vegetarian & Healthy Meals
Breakfast Anytime
Vegetarian • Italian • Southern & Such
Call for Daily Specials

2520 HYPERION AVE. • LOS ANGELES
(213) 664-2405

Hours: M-F 11-9 PM • S-S 9-7 PM



Walt Disney Studios in 1936, on the north side of Hyperion Avenue between Griffith Park Boulevard and Monon Street. The site is now occupied by the Mayfair Market, Video Journeys, Books Plus and other shops. Note the large house in foreground, which is now Tokio Florist, and the white building to the right of center which housed Hub Market and is now Trader Joe's. (*Security Pacific National Bank Photograph Collection/Los Angeles Public Library*)

10% off
orders



with this
coupon

**DISTINCTIVE WEDDING AND SPECIAL OCCASION CAKES
GRAND RE-OPENING AT OUR NEW LOCATION
1911 HILLHURST AVENUE, LOS ANGELES, CA 90027
(213) 664-0805**

**JOIN
FHRA**

SO, JUST WHO IS OUR SENATOR, ANYWAY?

by Don Waldrop

If you are a little befuddled by all this redistricting, term limiting and general mayhem in the State Senate, Assembly and City Council, take heart!

We are not alone. Even the congressional deputies admit to some confusion.

I'll attempt to clarify the situation, with the warning that I'm going on information given to me by political aides and deputies.

Right now, until the election in November, we technically do not have a State Senator, David Roberti having run for Alan Robbins' vacant Valley seat and Roberti's district having been carved up. Upon confirmation of the district, Senator Newt Russell (R) of Glendale will be our man. However, at this point in time, the offices of both Roberti and Russell are handling constituent calls and requests. (Russell: (818) 247-7021; Roberti (213) 876-5200)

Our new Assemblyperson was Barbara Friedman but, within months of her election, her district was dissolved and our Franklin Hills area was turned over to Representative Pat Nolan, a Republican and also of Glendale, (818) 240-6330.

City Councilman Michael Woo is no longer our Councilman. Franklin Hills is now represented by Council President John Ferraro and rejoined with the Los Feliz area to our north. This could conceivably have very positive effects since the two areas have many interests in common. (Ferraro: 485-3337)

TERREL MILLER YEAGER
Broker Associate



213 656-8400 x2795
Fred Sands



Mon - Sat: 10am - 5:30 pm
Sunday: 12 noon - 5 pm

TODDLER STORY TIME
1st & 3rd Wednesday each month

CHILDREN'S • BOOK • STORE

2640 GRIFFITH PARK BOULEVARD, LOS ANGELES, CA 90039
213 • 668 • 1996

LOS FELIZ LOCK & KEY SERVICE

- 24 Hour emergency service • Auto lock specialists • Locks installed •
- Combinations changed • Master Keying • Residential • Commerical •

1856 N. Vermont Avenue, South of Franklin Avenue
663-8351



(213) 660-9811

**1943 Hillhurst Avenue,
Los Angeles, CA 90027**

**Call Us For All Your
Travel needs. Enjoy the
Luxury of Full Service**



Discover
**SIMPLY
UNIQUE**

- GIFTS • ANTIQUES • JEWELRY
- COLLECTIBLES • LIGHTING • FURNITURE

Find beautiful things at
very reasonable prices

Tues thru Sun: 12 noon to 7 p.m. - Free and safe offstreet parking
1903 HYPERION AVENUE - SILVERLAKE 213/661-5454

NE TACC

Northeast Target Area Coordinating Council

By Barbara Dakin

The NE TACC, a coalition of neighborhood associations, representatives from local schools, social service organizations, students, parents and business associations, met on June 17. The meeting was called to explore how we can pull together our resources to improve educational, work and recreational opportunities for our youth and their families in this area of town.

Two upcoming projects arose from the meeting:

1. Another Marshall High School Beautification Day. Scheduled for September 12 at 8:00 a.m., Marshall High students, community members, faculty, parents, and community service organizations will join forces to remove litter, clean graffiti and paint classrooms to give the school a much-needed face lift.

2. A "Community Cultural Fair and Concert" on the athletic field. NE TACC plans to assist the student council members at Marshall in organizing the event. A tentative date

of October 23 has been set, and future NETACC meetings will detail the plans.

Future projects may include:

- assisting in the creation of a corps of volunteer tutors to work one-on-one with needy students at all levels.
- setting up parenting classes which would for parents throughout the community.
- establishing a pool of business and community contacts for jobtraining and apprenticing of local youth.
- A community resource directory to be produced by NE TACC and made available throughout the community.

The next NE TACC meeting will be held on Tuesday, September 1, from 6 p.m. to 8 p.m. in the Marshall High Teacher's Cafeteria. NE TACC is open to anyone interested in lending a hand. Contact Barbara Dakin, Co-chairperson, at 413-4221 for more information.

PALERMO

R I S T O R A N T E I T A L I A N O



Delicious Italian Cuisine In The Old World Tradition

OPEN DAILY 11:00 a.m.

CLOSED TUESDAYS

1858 N. VERMONT AVENUE, LOS ANGELES (213) 663-1178 and 663-1430

SUNRISE PET AND FEED

A complete line of pet supplies and food for all animals

(213) 665-2215

4327 Sunset Boulevard
Los Angeles, CA 90029
(across from McDonalds)

15% OFF

Must present this coupon. Limit one coupon per customer.
All purchases except dog food, cat food and birdseed.
Offer ends October 1, 1992

WHAT YOU DON'T KNOW COULD HURT YOU

by Dr. Renée Davidson

What does the word Chiropractic mean? It's meaning is Latin in derivation: *Chiro* meaning "hand" and *practico* meaning "practiced" or "done by" It translates to mean "done by hand."

Is a Chiropractor a doctor? Yes, he or she has a D.C. degree, meaning Doctor of Chiropractic, earned with six years of private Chiropractic college education.

Why is there sometimes animosity between Chiropractors and some members of the medical profession? Because for many, many years there has been too little communication between the two professions. A lot of false information has been spread about Chiropractic in an effort to keep the professions fighting one another instead of helping people more. Many Chiropractors and members of the medical profession realize however, that not every aspect of a persons health is answered by only Chiropractic or only medicine.

Why do most people go to the Chiropractor? Usually they have back or neck pain and want relief. Headaches, hip, leg and arm pain or numbness as well as muscle tension and stress are also common complaints that Chiropractors help to relieve.

What causes the neck and back to go out of place, "so to speak?" Many causes are possible, such as the accumulated effects of bad posture, incorrect bending and lifting, the wrong kind of exercise, car accidents, falls, stress, sleeping the wrong way and/or ignoring occasional muscle aches and pains.

What are some warning signs that I may need Chiropractic care? Back or neck pain or stiffness, headaches, arm and/or leg pain, persistent muscle tension, pins and needles, numbness or nervousness to name a few.

What will happen if I have back or neck pain and don't take care to get it corrected? The vast majority of the time it will get worse. Problems can often become debilitating very quickly if not corrected.

How effective is Chiropractic in relieving pain and tension? Extremely! The Chiropractor is a specialist in relieving muscular and nerve and joint pain without drugs or surgery.

Should I have any reason for concern if I've never been to Chiropractor before? No! A Chiropractor is trained to do a complete physical examination of any area being diagnosed for Chiropractic treatment. If yours is not a Chiropractic problem, the Chiropractor is trained to determine that and will refer you elsewhere. Most Chiropractors are happy to answer any questions someone new to the subject may have prior to any treatment being given.

Is Chiropractic treatment expensive? No. Most Chiropractors have very reasonable rates and will give discounts to patients without health insurance. Most health insurance covers 80% of Chiropractic costs. All automotive insurance in the case of a motor vehicle accident and all Workers Compensation insurance covers Chiropractic costs 100% and no medical referral is required.

Almost any chiropractor can give you fast relief from back and neck pain . . .

. . . but not everyone will care enough to listen to you and treat you like a good friend would, so that you and not just your body feel better.

- LASTING FAST RESULTS
- EFFECTIVE NATURAL TREATMENT
- NO ENDLESS VISITS
- NO DRUGS • AFFORDABLE
- MOST INSURANCE PLANS ACCEPTED



"I believe in taking the time to build a good relationship with you so that you feel comfortable. I use massage to prepare your body so that your treatment is as easy on you as possible and you feel better quickly."

- Renée

Call 213-664-6003 NOW
for a FREE CONSULTATION

**DR. RENÉE DAVIDSON
CHIROPRACTOR**

2107 Hillhurst Avenue, Los Feliz - 90027

MEDIAN. from page 1

project's momentum is increasing and the current schedule for installation targets the next rainy season, beginning in November.

The project will involve landscape design and obtaining permits; gathering financial, material and labor resources; coordinating the installation; and maintaining the plants for about two years until they are established. Toward these ends, quite a few individuals have already contributed much time and effort and some have pledged significant cash contributions.

The City of Los Angeles encourages private groups to undertake such projects through the City's "Adopt-a-Median" program. We will enjoy incentives such as simplifying and expediting the permit process and waiving the fees. The City will also remove the asphalt, relocate signs and

perform miscellaneous repairs. However, the bulk of the beautification and on-going maintenance work will be the responsibility of our organization.

The work will be supervised by experts and performed during weekends...

The cost of this project is obviously an important factor. As the design is still in conception, it is impossible to determine accurate figures at this time. Preliminary estimates for the cost of plants and trees are between \$5,000 and \$7,000. Plants and trees may be donated in accordance with plan specifications, but some plants, soil, mulches, etc., will inevitably have to be purchased. Your

cash donations will be used directly to acquire these materials. A sprinkler system is not desirable, but may be necessary, and is estimated at \$3,000.

One way to reduce the bottom line is to defer labor costs by way of volunteers. Some work will be physically demanding, but will also be enjoyable. The work will be supervised by experts and performed during weekends, perhaps two consecutive ones. Naturally, volunteers choose their level and amount of commitment, and share in the pride of the project's completion.

So who's idea was it to beautify the median? I don't really know. I'm only happy that someone thought to make the concept a reality, and that I am part of it. I hope that you will join us when the time comes that we need your help.

PLEASE SEE QUESTIONNAIRE ON NEXT PAGE.



george & associates REALTORS

"As a result of working with your neighbors over the last 16 years, I have perfected the marketing and advertising methods required to sell real estate today, even with current market conditions. Using these methods I've been able to sell my clients' properties in the Franklin Hills in 1991 and 1992 while many others stay unsold. So, if you are thinking of selling your home or apartment building in the Franklin Hills, I would enjoy sharing my proven approach to selling real estate with you. And I'm always interested in meeting another neighbor."

GEORGE MORENO, Broker/Owner

PROPERTIES THAT I AM CURRENTLY MARKETING IN THE FRANKLIN HILLS

- 2479 Claremont Avenue - Modern: 3 bd, 2.5 ba, den \$425,000
- 4232 Russell Avenue - English: 2 bd, 1 ba \$269,000
- 1962 Commonwealth Ave. - Duplex: 2 - 3 br, 1 ba \$359,000
- 2389 Lyric Avenue - New home: 3 bd, 2.5 ba, view \$435,000
- 3372 Rowena Avenue #3 - Townhouse: 2 bd, 2 ba, loft \$235,000
- 2483 Claremont Avenue - New home: 3 bd, 2.5 ba \$395,000
- 3831 Evans Street - Condo: 2 bd, 1 ba, view \$255,000
- 2361 Lyric Avenue - New home: 3 bd, 2.5 ba, view \$389,000
- 3804 Ronda Vista Pl - New home: 3 bd, 2.5 ba, view \$435,000
- 3000 Griffith Park Blvd - 8 unit Apartment Bldg \$595,000
- 3372 Rowena Avenue #9 - Townhouse: 2 bd, 2 ba, loft \$215,000

2131 Hillhurst Avenue, Los Feliz Village • (213) 668-2156

MEDIAN BEAUTIFICATION QUESTIONNAIRE

Your comments are welcome and will be considered. Please answer the questions to help us determine the viability of the project and return this section to FHRA-Median, PO Box 29122, Los Angeles, CA 90027 or call the new FHRA HOTLINE (213) 664-7247 with your answers and suggestions.

1. Do you feel the project is worthwhile?

YES NO

2. Are you interested in participating in the effort to gather resources? If so, in what way?

- Fund Raising
- Coordinating Volunteers
- Planting
- Maintenance

3. Do you anticipate making a cash donation?

YES NO

Amount: \$ _____

4. Do you anticipate making a material donation?

Item/Value? _____

5. Do you anticipate volunteering for the installation?

If so, how many weekend days could you work? 1 2 3 4

6. On a scale of 0 to 5, how experienced are you with planting? 0 1 2 3 4 5 (circle one)

7. Please include any comments or suggestions you feel will benefit the project, including your preferred design approach as illustrated by the sketches or your alternate designs.

Name: _____

Address: _____

Telephone: _____

HEART SONG ENTERPRISES



- Fruit and Gift Baskets • Bouquets
- Balloon Creations & Gift Wrap
- Cut Flowers • Art Cards
- Special Orders • Party Events

NEW! In Yellow Ribbon Market - Los Feliz Village
 1801 HILLHURST AVE., LOS ANGELES 90027
 (213) 953-2775 • 12 n - 7 pm, Sat. 9:30 am - 7 pm

join fhra

Richard Mach
 (213) 660-9630

Progressive Properties

Residential and Commercial Investments
 1662 N. Hillhurst Avenue, Los Angeles, CA 90027

FRANKLIN HILLS RESIDENTS ASSOCIATION

P.O. BOX 29122, LOS ANGELES, CA 90027

DATE _____

NEW RENEWAL

NAME _____ TEL (H) _____

ADDRESS _____ TEL(W) _____

- I AM INTERESTED IN: Planning /Zoning Graffiti Crime/Safety Traffic Library Newsletter
- Historic Preservation Environmental Parks Gangs Tutoring Youth Activities ABC-TV
- telephone tree legal membership beautification other _____

DUES are \$20.00 per couple or \$10.00 per person; AMOUNT ENCLOSED: \$10 \$20 \$50 Other \$ _____

Larger contributions are extremely welcome. Thank you for joining FHRA!

**IS IT WORTH 120 MINUTES OF YOUR TIME
to save the life of your wife, your husband, your child,
or your own life, if disaster strikes?**

Everyone who lives in the Franklin Hills should know that there are trained volunteers WHO CAN HELP YOU. This will be an evening well spent to find out where you can go and who will help you when disaster strikes. The speakers and their topics will include:

FIRE FIGHTERS: What they can or cannot do and what you can do to protect your own home. They will update you on Fire Suppression, Search and Rescue and First Aid/Medical procedures.

POLICE: Will they be there to protect you? Can looters be stopped? What can you do about it?
MEET YOUR FHRA RESPONSE TEAM LEADERS, the ones who will know what to do.

**Learn the basics. Learn where to go and how to get help.
Wednesday, AUGUST 12, 1992 – 7:00 p.m. to 9:00 p.m.**

L.I.L.A. (THE FRENCH AMERICAN SCHOOL)

4155 RUSSELL AVENUE

Entrance to campus one block east of Talmadge on Russell Avenue

Home Made Goodies



A RECOGNIZED PROFESSIONAL

Karen Weiss

F Fred Sands

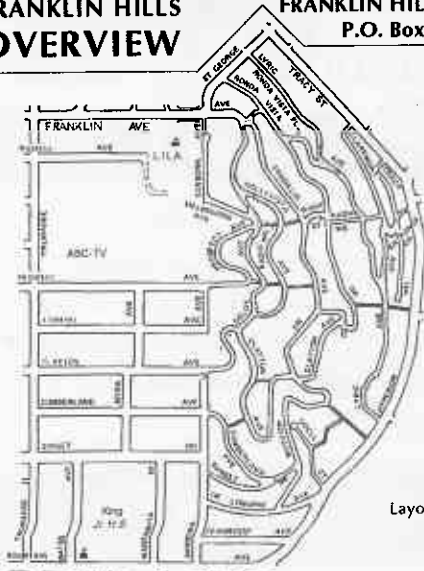


(213) 665-1121

\$339,000

**FRANKLIN HILLS
OVERVIEW**

**FRANKLIN HILLS RESIDENTS ASSOCIATION
P.O. Box 29122, Los Angeles, CA 90027**



Lithography by PRINCE OF PRINTING
Layout - Design by HOLLYVISTA GRAPHICS



Printed on RECYCLED PAPER