



OVERVIEW

FRANKLIN HILLS RESIDENTS ASSOCIATION

Issue #44

Fall / Winter

2012



When what to my wondering eyes should appear..

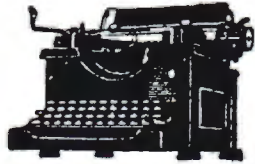
SEASON'S GREETINGS!

Inside This Issue

President's Report	2	Mr. Disney's Neighborhood	10,11,12
Franklin Median Update	3	CERT Training	13
Longtime Library Friend	4	Annual Mtg. Re-cap	14,15
FHRA Membership Form	5	Community Contacts	16
A Tale of Two Cyclists	6&7	DWP Work on Mayview	17
The Critter Report	8&9	Lecture Series at Library	18
		Blue Bin Bandits	19

President's Comments / *Chris Boutelle*

OVERVIEW



A semi-annual publication created and distributed by volunteer residents, neighbors, friends and supporters of the Franklin Hills Residents Association—a non-profit 501 (c) (3) organization
www.FranklinHills.org

FHRA@FranklinHills.org
 323-908-6078 voice/fax

Editor—Eric Frase

Ad Sales/Distribution -
 Chris Boutelle

ads@franklinhills.org
 323-666-5548

Contributing Writers

Bruce Carroll

George Grace

Andrea Iaderosa

Brenda Kilbourne

Armida Bolton

Charley Mims

Shirley Mims

Chris Boutelle

Eric Frase

Overview, P.O. Box 29122
 Los Angeles, CA 90029

The Season of Giving

Now that the presidential election is over, thank goodness, Franklin Hills is coming alive for the holiday season. Crisp, clear days help us shake off the late summer daze. It's time for holiday lights on the Shakespeare Bridge and your neighbors, many of them delivering the *Overview*, are out walking off a few holiday pounds and enjoying the Franklin Hills views.

This newsletter, as you may know, is supported by the wonderful, local businesses that advertise with us and by volunteers who write the stories, edit the paper (presently Eric Frase of Cumberland Avenue) and hand deliver the *Overview* to the 1800 homes and residences in Franklin Hills. We are always on the lookout for people who can contribute to our efforts to improve the neighborhood and keep it special. You can add to the greatness of Franklin Hills by writing an article or a poem or whatever for this paper. We really want to hear views and thoughts of our neighbors who make Franklin Hills such an attractive place to call home.

One such contributor over the years has been Carol Skinner, who will be retiring from the Board of Directors of the Franklin Hills Residents Association. A retired Jefferson High School music and choral teacher and herself a mezzo-soprano, she has lived in Franklin Hills on Hollyvista Avenue since 1965. She has been an active member in Mu Phi Epsilon, a co-ed music fraternity since she graduated from USC in 1957 and has been past president in the Dominant Music Club, a one hundred year old organization honoring women in music.



Carol Skinner

A Board member since 1995, Carol has worked on projects, large and small. For years she has been our representative to the Community Police Advisory Board and was active in the Franklin Hills Neighborhood Watch. She has written for

the *Overview* and worked on disaster preparedness groups. Carol was the Editor/Publisher of the *Overview* from 1997 to 2009, designing and editing every issue. She has given so much to the community and we are grateful for her service.

You too can help guide the Franklin Hills Residents Association by suggesting activities that can improve the neighborhood or by participating in some of our committees and projects already in progress. We encourage our neighbors to join in graffiti removal, crime watch, *Overview* delivery, cleaning up the median on the west side of the Shakespeare Bridge, helping to keep the Shakespeare Garden under the bridge looking good and especially writing for the *Overview*.

Thank you for giving back to the neighborhood of the place you call home. ■

**PLEASE SUPPORT OUR ADVERTISERS
 AND TELL THEM THAT YOU SAW THEIR
 AD IN THE FRANKLIN HILLS
 "OVERVIEW"**

Cover—Illustration by Eric Frase

Franklin Ave. Median Update

by Armida Bolton /photos by Bruce Carroll

Franklin Hills Residents Association volunteers, together with regular gardeners Lupe and Benjamin Mercado, filled mountains of black trash bags with dead leaves and branches, clippings and other debris during two cleanup days of the Franklin Avenue median last spring.


The cleanup days were a prelude to the installation of a new irrigation system, to replace the one installed in 1995, that had not operated for the last few years. Although the median is city-owned, adoption of the traffic island by FHRA meant that the organization is responsible for landscaping, maintenance, and installation of a sprinkler system, as well as payments to the DWP for water. Except for the paid gardeners, who come twice a month, all work is done by volunteers. Now thirsty plants are being watered regularly, and the purple Mexican sage, a mainstay of the median, is in bloom.

After several years of planning, preparation of landscape designs, filing of applications for permits, and fund raising, the median project became a reality in 1995. The first trees and plants were placed in the median on November 11, 1995. More than 30 volunteers, some long-time Franklin Hills residents, some newcomers, and some students from local schools, were on hand when the first vegetation went in the ground. FHRA still depends on monetary donations, volunteers at clean up days, and other support from members to maintain the median. Anyone with questions or suggestions or who wishes to volunteer should call the FHRA Voicemail at (323) 908-6078. ■

(Above, right) Gardeners Benjamin and Lupe Mercado used more sturdy PVC pipe to replace the flexible, but fragile tubing from the original installation in 1995.


(Right) New control valves and timers replaced the leaking old system.






CHI DYNASTY

S I N C E 1 9 8 3



“MOST UNIQUE & EXOTIC
CHINESE CUISINE
FOR THE GOURMET.”
SERVING LOS FELIZ
FOR OVER 23 YEARS.
FAMILY OWNED
AND OPERATED.



1813 HILLHURST AVE • IN THE LOS FELIZ PLAZA • FULL BAR • DINE IN • TAKE OUT • DELIVERY

323-667-3388
CHIDYNASTY.COM
FAX 323-667-3393

Leading Friend of Local Library Feted by LaBonge / *by Brenda Kilbourne*



On August 28, Councilman Tom LaBonge presented a proclamation of recognition to David Moss (front, center) for his years of volunteer service with the Friends of the Los Feliz Library.

For almost a generation, David Moss served as President of the Friends of the Los Feliz Library, supervising its relocation from a storefront at 1839 1/2 Hillhurst to its new building on the corner of Franklin and Hillhurst Avenues (location of the former home of Leonardo DiCaprio) at the foot of the Franklin Hills.

David replaced the first president of the Friends, the ailing Alyce Miller and from the beginning, successfully battled two city councilpersons and even the ghost of Aline Barnsdall to fight against the location of a new library from the corner of Hollywood Blvd. and Vermont, to a safer area. At a bitter meeting where the police and fire departments were summoned, a small coalition of twelve Friends of the Los Feliz Li-

brary successfully fought strong opposition with the assistance of Donna Matsen, who knew that building a library in Barnsdall Park would be illegal, according to the city charter.

After the new library was completed at Hillhurst and Franklin, David led the Friends group on a fund-raising event that included a catered dinner, guests in formalwear, and entertainment by a classical pianist. With this, the Friends were on their way to raising funds for library programs the city could not afford to finance. Since then, David continued to serve as library historian and oversaw the monthly book sales (on the fourth Saturday of the month) until his recent move to retirement in the Valley. ■

LOS FELIZ LOCK & KEY SERVICE
 24 Hour emergency service • Auto lock specialists •
 Locks installed
 Combinations changed • Master Keying
 Residential • Commercial
 AFTER 45 YEARS AT THE SAME LOCATION
 WE HAVE MOVED AROUND THE CORNER TO
 4647 Russell Avenue, South of Franklin Avenue
(323) 663-8351

Lyric Preschool
 2328 Hyperion Ave • 323. 667.2275
 www.lyricpreschool.com

- nurturing environment
- creative play
- home-style lunches
- serving silverlake & los feliz since 1965

JOIN FHRA or RENEW your MEMBERSHIP
DONATIONS TO THE FHRA ARE TAX DEDUCTIBLE.

Thanks for your support.

DATE _____

NEW RENEWAL

NAME _____

ADDRESS: _____

HOME PHONE _____ WORK PHONE _____

CELL PHONE _____ FAX _____

E-MAIL: _____

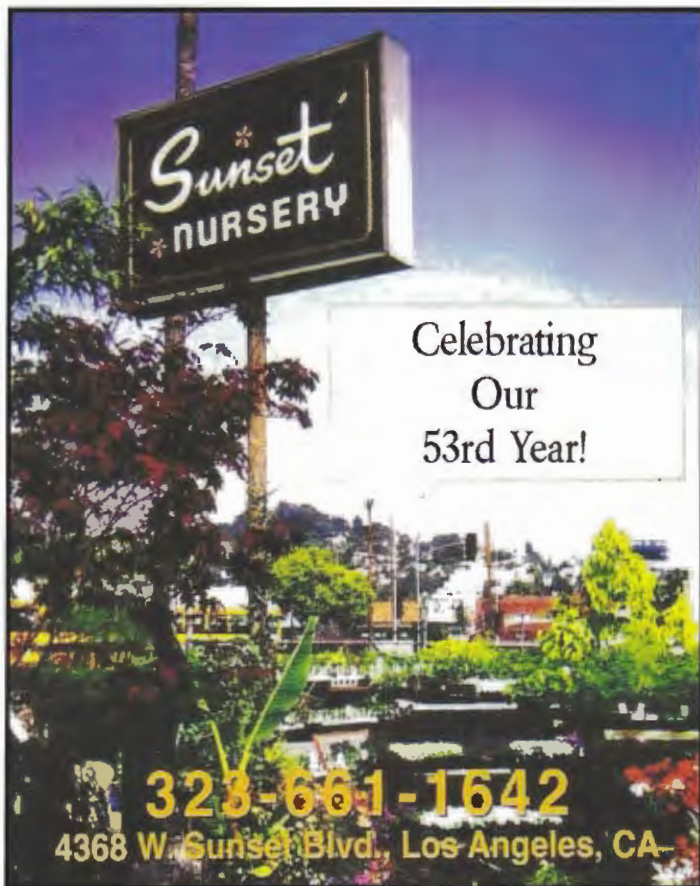
I AM INTERESTED IN:

- Beautification Community Garden Crime/Graffiti Disaster Prep./Safety Historic Preservation Legal
- Median Neighborhood Watch Newsletter Noise Abatement Planning/Zoning Prospect Studios Relations
- Schools/Youth Activities Stairways Website Welcome Folders Other _____

DUES are \$30.00 per couple or \$15.00 per person --- Larger Contributions are Appreciated

AMOUNT ENCLOSED: \$15 ___ \$30 ___ \$50 ___ Other \$ _____

Mail your check to: FHRA PO Box 29122 Los Angeles, CA 90029



Sunset NURSERY

Celebrating
Our
53rd Year!

323-661-1642
4368 W. Sunset Blvd., Los Angeles, CA

Hi·TECH

AUTOMOTIVE

AUTO REPAIR • TIRES • SHOCKS • ALIGNMENT

4000 Fountain Avenue
Los Angeles, CA 90029
T: 323.661.2788
www.hitechsilverlake.com

BIKE, STOP, DEAD & AUTO Are All Four Letter Words -

Story and Photo by Bruce Carroll

On a warm Tuesday afternoon in August, police and paramedics rushed to the corner of Franklin and Talmadge because one 14 year old boy on a bike tried to rush through the corner without stopping at the STOP sign. To make things worse not only did the rider violate the California vehicle code which requires cyclists to obey all traffic rules such as riding on the correct side of the street and stopping at signs and signals, but it also mandates that those 18 and under must wear a helmet, which this teenager also failed to do.

He was riding south on Talmadge when he collided with a Honda driven by Jorge Perez with three children inside. The car was heading west on Franklin after stopping at the 4 way stop. Less than a week later there was a very close "near miss" at the same intersection when an adult rider heading north on Talmadge zoomed past two stopped cars and the stop sign and was nearly hit by a driver who had the right of way. The FHRA alert about the incidents that was sent to our e-mail list produced a flood of responses about similar close calls that could easily have been deadly and questions about just what are the rules.

While the basic traffic rules for bikes and cars are the same there are places where they differ. The state outlaws riding bikes on the sidewalk unless the city allows it, which Los Angeles does, (LAMC 56.15) provided it is not done, "with a willful or wanton disregard for the safety of persons or property."

We've likely all been surprised at night spotting a darkly clad biker without a reflector or light in sight. California Vehicle Code sec 21201 has detailed specifics about the lights required for use of bikes after dark:

- (1) A lamp emitting a white light that, while the bicycle is in motion, illuminates the highway, sidewalk, or bikeway in front of the bicyclist and is visible from a distance of 300 feet in front and from the sides of the bicycle.
- (2) A red reflector on the rear that shall be visible from a distance of 500 feet to the rear when directly in front of lawful upper beams of headlamps on a motor vehicle.
- (3) A white or yellow reflector on each pedal, shoe, or ankle visible from the front and rear of the bicycle from a distance of 200 feet.
- (4) A white or yellow reflector on each side forward of the center of the bicycle, and a white or red reflector on each side to the rear of the center of the bicycle, except that bicycles that are equipped with reflectorized tires on the front and the rear need not be equipped with these side reflectors.
- (e) A lamp or lamp combination, emitting a white light, attached to the operator and visible from a distance of 300 feet in front and

from the sides of the bicycle, may be used in lieu of the lamp required by paragraph (1) of subdivision (d)

The bottom line is: your life is on the line. According to the website **BikinginLA** at least 71 cyclists were killed in southern California accidents in 2011. So follow your Mom's advice: Be careful, considerate and obey the laws. ■



(Left) Officers Cho and Abarca discuss the accident while in the background driver Jorge Perez with his children wait to be questioned.

On My Wheels / Story and Photo by Shirley Mims



When I ride my bike in the Franklin Hills, I don't ease down the hill, I navigate the cracks. If you think that driving in your car over the bumps on our broken up concrete streets is uncomfortable and annoying, try it on a bike. There is very little between you on the seat and the jolts from the roadway, if you know what I mean (OUCH!)

How bumpy is the road? So bumpy that I have to carry a wrench with me to retighten the bolts that come loose from all the jarring during even a short ride. So bumpy that if you ride too slowly, the gaps in the roadway will catch your tire and pull you down. So bumpy that if you ride too fast, an encounter with a large crack can throw you over the handle bars or knock you over.

So why do it? Riding a bike is fun, of course. And it's green, a gas saver. Best of all, it's good exercise. Even if you have to push your bike back up the hill, it's still good cardio.

But there are certain dangers when riding a bike - large cracks and bumps in the road, car doors opening along parkways, narrow roadways, gasoline exhaust and other pollution when your lungs are wide open, cars not stopping at stop signs. What little protection my helmet provides for my skull won't do anything for the rest of my body in a crash. Bike riders have to be careful.

By first-hand experience, I know that I am vulnerable to the injury a car can do to me while on my bike. In an accident last summer, I was lucky to escape more serious injury with no broken bones, just a deep bruise to my arm which was bad enough. And no, the accident did not result from me riding through a stop sign. I stop at

all stop signs, not just because it is the law but because I know that my bike and I are no match for a 2-ton vehicle, even at 5 mph.

Not all bike riders break the rules. Unfortunately, many do. Bicyclists who don't stop at stop signs give others a bad name especially to drivers who are caught by surprise when a bike zooms through an intersection. I am saddened by the number of accidents that are caused by bicyclists who run stop signs. However, I think that many of the accidents occur because cars also don't stop at stop signs or the driver isn't paying attention. Who do you think wins in those cases? Consequently, we all have to be careful - drivers, bikers, and pedestrians alike.

Please, when you go out on the road, watch out for both yourself and for others. Whether you are driving or riding, stop at all stop signs. If you are driving and encounter a bicyclist, slow down and consider that he or she might be navigating cracks in the road, and give them a little space as you pass by them. Bicyclists, ride safe. It is better to be overly cautious than to risk your life. ■

What's Going on? Subscribe to FHRAlerts / by *Bruce Carroll*

If you don't know what an FHRAlert is, you're not one of more than 550 Franklin Hills residents who get e-mails alerting them to a wide range of incidents from neighborhood reports of car and home break-ins, to hints on watching the last space shuttle fly-over. There is no set schedule for the alerts, they are sent when we receive info that might help the community. In the last year we've sent about 30 messages, with crime prevention tips, warnings of possible noise or late night activity at The Prospect Studio, street closures, and unfortunately too often reports from Franklin Hills residents who have been crime victims. If you'd like to get on the list, it's easy. Just e-mail FHRA@franklinhills.org and ask to be put on the FHRAlert e-mail list. ■

Jose de Jesus Sanchez
Gardening Services
Free Estimates

Sprinklers, New Lawns
Tree Trimming, Clean-up
Clean Gutters

818- 834- 0273



WATER \$AVING TIPS

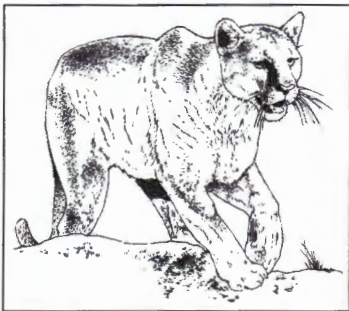
- Conserving water helps the environment and saves you money on your utility bill.
- With winter rains coming, consider buying or constructing a rain barrel to capture rain runoff from your roof. Use the collected water on your tree wells and garden.
- Purchase an inexpensive bucket and keep it in your shower. While you are running the water and waiting for it to get hot, put the bucket under the faucet. Use the bucket water on your plants outside or to flush your toilet.

The Critter Report



by George Grace

The sad news that Puma-25 (a one year old female mountain lion) was recently found dead illustrates how precarious life is for these magnificent animals in Southern California. Happily, three year old male Puma-22 - the first confirmed occurrence of a mountain lion in Griffith Park - is alive and well. After his discovery by the (FHRA supported) Griffith Park Natural History Survey wildlife corridor cameras in February, experts from the National Park Service (NPS) captured, collared, and released him.



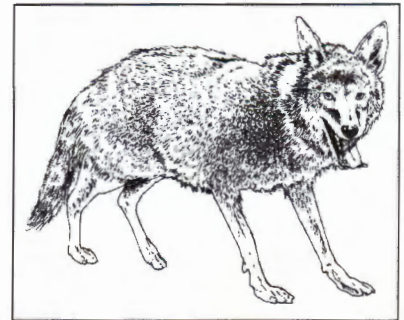
Due to his proximity to residential areas, P-22 is probably the most closely monitored puma in the National Park Service Mountain Lion Preservation research project. To illustrate just how closely he is followed, NPS decided to outfit him with a new GPS collar in August, and knew exactly where to go. He was

located in a remote ravine where the amazing NPS wildlife biologist Jeff Sikich climbed a nearby tree, and from an overhanging bough used a silent dart pistol to tranquilize him. He was asleep in three minutes. You can see a video of P-22 - and his new collar - at a web site set up by wildlife researcher Matt Whitmire that features videos and photos of Griffith Park wildlife.

The link is <http://griffithparktrailcam.com/>

No one knows exactly how long P-22 will hang out in the Park. NPS ecologists think he will soon leave to search for a mate, but with no competition from other mountain lions, he may stay for a while. In the meantime, he will be under constant surveillance .

Not much is happening on the coyote front. We've had nine new postings on our Coyote Sighting Survey since last July, five from the FHRA area, three from Griffith Park, and one from



Your neighborhood pharmacy

...

Friendly, helpful staff

Fast service

Free local delivery
Free shipping

Most insurance plans accepted



Sorin Kazangian
Pharm.D.
2716 Griffith Park Boulevard
(next to Gelson's Market)
Los Angeles, CA 90027

323.661.8366
Mon - Fri: 9:30 AM - 6:30 PM
Sat: 9:30 AM - 5:00 PM

\$15 off in store merchandise for transferred prescription.

Discount Medical Pharmacy coupon valid through December 31, 2012

25% off any single store item.

Discount Medical Pharmacy coupon valid through December 31, 2012




Got a Vacant Unit?

Call The Rental Girl!

- * She'll find you qualified tenants FAST!
- * She'll do all the work - from advertising to lease signing!
- * She comes highly referred!
- * She'll save you time and money!
- * She is affordable!
- * Pay a one time fee once the unit has been rented!

*Los Feliz * Silver Lake * Echo Park*

323.308.5688 TheRentalGirl.com




DRESDEN RESTAURANT

American Continental Cuisine

"Home of Certified Angus Beef"

Dinner Nightly
4:30pm - 11pm

Happy Hour Nightly
4:30pm - 7pm



Marty & Elayne
at the piano bar

Having a birthday? Your dinner will be complimentary, up to \$20, the month of your birthday, with your party of 4 or more. Telephone reservations required - Mention this ad.

1760 N. Vermont Avenue
323-665-4294
Valet Parking in Rear
www.thedresden.com
Zagat Rated

Santa Monica beach. None of them were exceptional, and all have been posted on the Coyote Sighting website. You can read the 360 plus postings and record your own coyote experience at [http:// www.gmrnet.com/Coyotea.html](http://www.gmrnet.com/Coyotea.html). (The "C" in Coyotea has to be in caps to access the page.)

As far as other wildlife here on the hill, I can only speak from personal experience, but can report seeing skunks, and a raccoon family that moved into my attic. I know that rac-

coons have a reputation of being dangerous, and I don't recommend welcoming them into your attic... but seeing Mama nursing her babies was too hard to resist. She never showed any hostility towards the brave souls who ventured up to see her, but after being discovered she soon got tired of prying eyes and shortly gathered up her babies and moved out. It was quite



an experience!

I've always been thrilled that Franklin Hills and our hillside neighborhoods shelter such diverse wildlife populations. I don't know how you feel, but I welcome the opportunity to be so close to the Natural World. ■

If you'd like to share your wildlife experiences, please send me email at gmrnet1@gmrnet.com. I'll be happy to write about them in a future article.

FOUND a PET? LOST a PET?

Go to **Furry Friends of Franklin Hills** on **Facebook**-
Now reuniting 2-legged and 4-legged friends
in our neighborhood!

MR. DISNEY'S NEIGHBORHOOD

TEXT AND PHOTOS* BY ERIC FRASE

Franklin Hills seems to be a magnet that attracts and pulls in creative residents—folks who are artists, free-thinkers and innovators. So, it should come as no surprise that our neighborhood was the home of a visionary who came up with new techniques in animation arts and entirely new concepts and technology for attractions in a new type of amusement park.

In 1923, Walter Elias Disney arrived in Franklin Hills and within a few decades, the world of entertainment (and an orange grove in Anaheim) would never be the same again.



▲ 22-year-old Walt Disney left Kansas City (and a failed cartoon business) and headed to Hollywood with dreams of being hired as a director at a studio. He stayed with his uncle, Robert Disney, who resided at 4406 Kingswell, just a couple of blocks west of Talmadge Avenue.



◀ After several months of no luck finding a studio job and after several months of working with his brother Roy on new animation projects in his uncle's garage, Walt and Roy rented a back office (at \$10/month!) at 4651 Kingswell, just east of Vermont Avenue. They hired two young ladies to ink and paint the cells, Roy operated a secondhand camera and Walt did the animation. Today, this storefront has a small round sign in the front window confirming that the store there is indeed the first Walt Disney Studio."



Photos on this page are from www.lapl.org

▲ In 1926, Walt opened an expanded facility at the corner of Hyperion and Griffith Park Blvd. The Walt Disney studio operated at this location until 1940, when Walt built a new facility in Burbank. Today, this parcel of land is the site of a Gelson's Market.



▲ Another view of the Walt Disney Studios at Hyperion and Griffith Park Blvd. John Marshall High School looms in the distance. It is at this studio that the early Mickey cartoons, Silly Symphonies, and the first animated feature, *Snow White and the Seven Dwarfs* were all created.





◀ In the summer of 1926, Walt and Roy bought side by side lots on Lyric Ave. at St. George. They purchased two kit homes (2 bedrooms / 1 bath) from Pacific Ready-Cutt. Walt's home would go up on the corner and Roy's (a mirror design of Walt's) would be on the adjoining lot.

66		No	Jellatrap John	Lodger	M	W	38	D	No	09	Illinois	51	Same place				
67			Chirella Ann	♀ Lodger	♀	W	32	S	No	10	New York	56	Same place				
68			Blanes Josephine	Maids	♀	W	27	S	No	5	Mexico	37	Same place				
69	4053	68	0	46,000	No	Disney Walter E.	Head	M	W	38	M	No	11	7 Illinois	51	Same place	
70			Lillian B.	Wife	♀	W	40	M	No	14	70	Illinois	52	Same place			
71	Way		Diane	daughter	♀	W	6	S	No	0	California	18	Same place				
72			SHARON	daughter	♀	W	3	S	No	0	California	13					
73			Buddhu Abryx B.	Butler	M	W	34	M	No	14	Illinois	1	St Louis				
74			Vonda L	Cook	♀	W	32	M	No	19	50	Missouri	16	St Louis			
75			Smith Olive	nurse	♀	W	54	S	No	14	30	England	100	Same place			
76	4071	69	0	12,500	No	Johnson Olive	Head	M	W	63	38	M	No	90	Ireland	114	Same place
77			Marilyn	Wife	♀	W	46	M	No	29	70	Maryland	72	Same place			
78	4101	70	0	12,000	No	quasloann YEAN	HEAD	M	W	36	51	No	40	NEW YORK	56	SAME PLACE	
79			Dinette	Wife	♀	W	28	M	No	14	54	CALIFORNIA	54	Same place			

▲ The 1940 census workers found the Walt Disney family residing north of Los Feliz Blvd. on Woking Way. In addition to his wife and two daughters, the census reports that the household also included a butler, a cook, and a nurse. The census also reveals that Lillian Disney was approximately two years older than her husband.

In the 1990s, Disney's spirit moved back to his old neighborhood when the movie studio he founded bought the ABC-TV network including its west coast studios at Prospect and Talmadge, just a short walk from where he lived 70 years earlier.

All About CERT Training

By *Andrea Iaderosa*



On Sept. 27, 2010, Sally Menke went hiking in Griffith Park. It was an extremely hot (over 100 degrees) day, and she did not have enough water with her. When she failed to come home that night, her friends called the authorities. Her body was found the next morning.

LAFD Capt. Castro of our Battalion 5 was the one who had to inform Sally's friends and family that Sally had not been found alive. Capt. Castro felt that if more people had been involved in the search, and if the Fire Department had gotten involved sooner, Sally might still be alive today.

This is one of the ways in which CERT training comes into play. I recently participated in a Lost Hiker CERT exercise in Griffith Park that was organized by the LAFD. Captains Castro and Elder of Battalion 5 and CERT-LA hope to get volunteers in our area organized to assist the Fire Department in search in rescue in Griffith Park so that nothing like what happened to Sally Menke ever happens again.

For the exercise that day, there were approximately 150 CERT trained participants. We split up into four different search groups and were assigned four different trails to look for lost/injured hikers. An area Boy Scout troupe participated in the roles of lost/injured hikers. We walked up our trail with one team member in constant radio (FRS - 2 Way) contact with the LAFD Incident Command Post.

Two things became clear immediately:

1. How daunting a task it can be to look for someone in Griffith Park - especially if they have wandered off of one of the main trails. There were many, many smaller side trails that we needed to explore in order to find our lost hikers in this exercise.
2. When looking for someone in a place like Griffith Park, fitness and preparedness is an issue.

Volunteers who showed up in shorts and sandals were not allowed to participate in the search and rescue part of the exercise - those who were not dressed properly, or not fit enough for the hiking were assigned roles in other areas (medical and incident command, traffic, etc.)

Climbing uphill in the heat with backpacks full of water and medical supplies, and then having to carry injured boy scouts down steep side slopes was exhausting, and a certain amount of fitness was needed.

Our team found our lost hikers in about 1 ½ hours. Two of the other search groups took much longer. Even though the scouts were told not to make it too difficult for us because this was a beginning exercise, it was still not that easy.

The exercise proved to be a good start, and a great learning experience. It was yet another example of how CERT training can be used in our community. I also attended a Northeast Disaster Preparedness exercise yesterday that I would love to tell you about, but that will have to wait because this article is long enough!

We are so fortunate to have Griffith Park at our doorsteps! A reminder to those of you who go hiking:

1. Bring plenty of water and stay hydrated
2. Dress appropriately
3. Do not depend on your cell phone - reception will always be spotty in the hills.
4. Wear sunscreen, and in the summer avoid hiking during the hottest part of the day
5. Hike with a friend if possible, and let friends and family know where you are going and what time you expect to be back

For more information about CERT training, or how to get involved in CERT activities in our area, please feel free to contact me (323. 666. 3950). ■

Neighbors + Information + Entertainment = FHRA's 24th Annual Meeting

By Bruce Carroll

The 2012 FHRA annual meeting was held on June 23, 2012 at The Prospect Studios. President Chris Boutelle introduced candidates for the FHRA Board of Directors who were elected by voice vote. New to the Board this year is retired teacher Brenda Kilbourne, who has a long record of community service. She's joined by returning board members: Armida Bolton, Eric Frase, plus Charley and Shirley Mims.



The first guest speaker, 43rd District Assembly Member Mike Gatto proclaimed, "I love the Franklin Hills it's such a special and unique part of LA." Gatto has reason to know, because he grew up on Ronda Vista. He also presented an official certificate honoring FHRA Boardmember Carol Skinner for her long years of community service as *Overview* editor and representative on the Community Police Advisory Board. Carol's declining health prevented her from attending the meeting for the first time in more than 20 years.

LAPD Northeast Division commander Capt. Bill Murphy and City Councilmember Tom LaBonge discussed neighborhood concerns, among them loitering, littering,

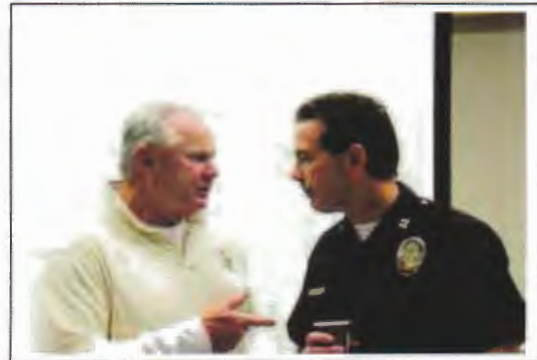
graffiti and drug use on our neighborhood stairs. LaBonge explained, "I'm for medical marijuana where it's necessary, but don't be smoking it next to King Middle School, don't be smoking it on the public stairs, don't have so many facilities."

LAPD senior lead officer Al Polehonki advised that letting LAPD know what times and patterns of activity are observed and suggested that people walking the stairways is not just good exercise, but might be good crime prevention. "Just the fact that you are there makes them uncomfortable."



Capt. Murphy mentioned that Officer Polehonki (left) will be retiring early in 2013 after 32 years on the LAPD.

As for crime stats, Capt. Murphy noted a slight increase in non-violent crime which he hopes to reverse before year's end to beat last year's record lows. He explained that in Franklin Hills "about 50% of your crime is auto related crime." He delivered the oft offered advice not to leave valuables in your car and not to leave garage doors open. He mentioned that as he drove through the hills on his way to the meeting he passed many homes where "the garage door is wide open. tools and everything else inside could just be grabbed right away. You can't do that."



He called for residents help in fighting the criminals by linking up with the LAPD Northeast Division via social media, especially Facebook. "The problem we are facing at NE right now is We've driven the crime down so spectacularly over the last several years that we can't arrest our way into lower crime stats." And he warned that changes in the laws have resulted in more state prisoners being released on locally supervised parole.

LaBonge also pointed out that his area deputy, Mary Rodriguez, a long time Franklin Hills resident, had surveyed the many area concrete streets in disrepair with FHRA President Boutelle. LaBonge said that beyond basic repairs he was trying to get the city to buy a concrete plant, since they currently are unable to repave concrete streets.

LAFD Capt. Joe Sharrar, from fire station #35 on Hillhurst, which lost one engine due to budget cuts, seemed pessimistic about getting the cuts restored. "The vast majority of the closures are still in place with no window to get them back." He said his station goes on an average of ten runs per day and 80% are medical.

Andrea Iaderosa of the Greater Griffith Park Neighborhood Council reminded those attending that the GGPNC sponsors LAFD's Community Emergency Response Training (CERT) classes. The seven week courses are a great way to gain the skills that will prepare you to help yourself and the community in all sorts of disasters.



Next up was FHRA Secretary, Elizabeth Richardson. She discussed the proposed changes to the FHRA by-laws, the most substantive of which was extending FHRA's boundary on the north from its original Franklin Ave./St. George St. line to include the area along Tracy St. north then west to where it intersects with Talmadge St. The FHRA's presence had already been felt in that area with projects such as working with Monon St. residents to protect and beautify the area below the Shakespeare bridge. The by-law changes were overwhelmingly approved.

The meeting was held at the historic Prospect Studios lot and the incoming studio manager Janet Campus welcomed her new FHRA neighbors. As the studio approaches its centennial there were displays of fascinating historic pictures from its past, collected by Augustus Galen (left) one of the longtime employees who is working to preserve the studio's rich history. Part of that history is the 1928 film epic "Noah's Ark" which portrayed parallels between World War I and Noah's time. Its production brought mobs of extras to ancient temple sets on the then Warner Bros. lot. FHRA treasurer Bruce Carroll showed some highlights from the transitional film that is mostly silent, but has a few "talkie" scenes. One of the amusing parallels in the film is the use of a slow pan up the then brand new LA City Hall to illustrate the title "in every age there has been a tower of Babel."



As usual there were raffle winners who were rewarded with Laemmle Theatre passes, a tower of sweets and a Cheesecake factory gift card. That was followed by a comedy short from the studio's Vitagraph days with Oliver Hardy and Larry Semon.

The final guest was former FHRA President Adam Weisman who talked about FHRA residents having priority for plots in the Norm Harriton Community Garden on the LILA School Campus. Weisman, who is Chairman of the LILA Board, said that they are purchasing property in Burbank and plan to move high school students from the Russell Ave. campus which should help relieve traffic and comply with the long standing city limits on the number of students permitted.

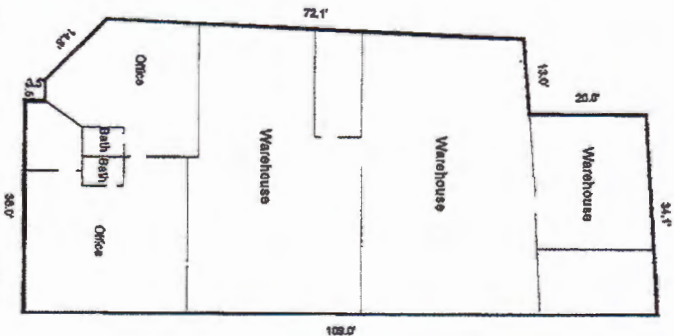
Thanks to all the FHRA members who joined us at the meeting and those who promptly responded to our membership letters in June. Membership for 2012 is running over 8% ahead of last year. If you haven't joined yet it's never too late. Click on the "Join FHRA" link on our www.FranklinHills.org website. New this year you can even make your contribution with your credit card or PayPal.



**3650 Eagle Rock Boulevard
Glassell Park**

Time to Buy Commercial Property?

With the economy on the comeback, small businesses and investors are looking to purchase prime commercial properties for future growth--at attractive prices. For example, consider this well-located one-story nearly-5,000 sq. ft. building with many possibilities: studio; production facilities; warehouse; light industrial/manufacturing--what do you need? Freeways-close; 2 grade-level entrances with roll-ups; reception area (air conditioned); lavatories; storage mezzanine; some parking; 1971 construction; state enterprise zone. Well-appointed offices with a designer touch. Here's a great owner-user opportunity for the entrepreneur ready to expand and/or to say "good-bye" to the landlord.



\$799,000

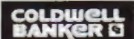
Richard Stanley

1917 Hillhurst Av.
Los Angeles, CA 90027

#1 agent, Coldwell Banker -
Los Feliz, 1995-2009

DRE license #: 00971211

rstanley@coldwellbanker.com
213 300-4567 cell / voice mail



RESIDENTIAL BROKERAGE

©2012 Coldwell Banker Real Estate LLC. Coldwell Banker is a registered trademark licensed to Coldwell Banker Real Estate LLC. An Equal Opportunity Company. Equal Housing Opportunity. Owned and operated by NRT LLC. All rights reserved. If your property is listed with another broker, this is not intended as a solicitation.

COMMUNITY CONTACTS

- Prospect Studios.....(323) 671 - 5000 LA
- City Services..... 311
- Animal Services.....(888) 452-7381
 - Dead Animal Pickup.....(888) 452-7381x2
 - Lost Animals.....(888) 452-7381x2
 - Barking Dogs.....(888) 452-7381x3
- Building & Safety Violations.....(888) 524-2845
- Councilmember Tom Labonge
 - 4th District213) 485-3337
 - email: councilmember.labonge@lacity.org
 - Field Deputy: Mary Rodriguez
 -(818) 755-7630
 - e-mail: mary.d.rodriguez@lacity.org
- FHRA Voicemail.....(323) 908-6078
 - e-mail: FHRA@franklinhills.org

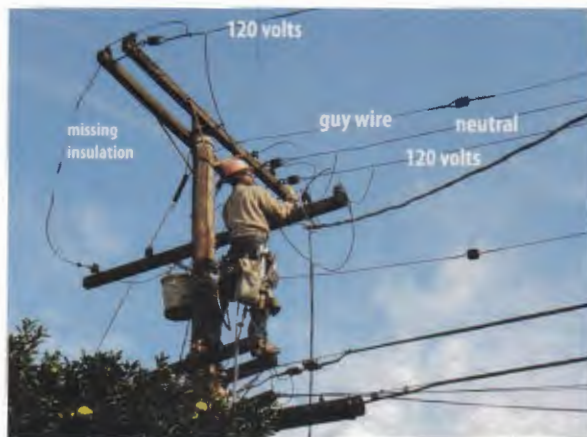
Fire Department:

- Emergency.....911
- Non-Emergency..... (213) 485-6185
- Homeless Services.....211
- LA Info Line.....211
- Los Feliz Public Library..... (323) 913-4710

Police:

- Sr. Lead Officer Al Polehonki.....(213) 793-0763
 - Emergency.....911
 - Non-Emergency.....311
- Northeast Division..... (323) 344-5701**
 - Gang Problems..... (323) 344-5754
- Graffiti..... (213) 847-0511
- Parking Enforcement..... (213) 972-8470
- Poison Control..... (800) 222-1222
- Rape Hotline..... (310) 392-8381
- Restraining Orders..... (213) 974-5587
- School Police:
 - Marshall High School..... (323) 671-1440
 - King Middle School..... (213) 625-6631
- Street Services..... (800) 996-2489
- Trash Services... (800) 996-2489 x2
- Bin Replacement..... (800) 773-2489 x1
- Bulky Item Removal..... (800) 773-2489 x1
- Missed Trash Pickup..... (800) 773-2489x1
- Tree Trimming (Hazards)..... (800) 996-2489 x1
- Water & Power..... (800) 342-5397
- We Tip (Anon. Crime Tips)(800) 893-7283

More Reliable Power To The People / *Story and Photos by Bruce Carroll*



You may have seen this new fiberglass utility pole resting on the sidewalk at Talmadge and Franklin for several weeks this fall. Now it's found a new home behind a house in the 2100 block of Mayview Drive where termites were well on their way to eating up the old utility pole. It's part of a DWP project that started in June when a transformer on the pole went bad. A new transformer was installed on a different pole nearby.

Homes serviced by that transformer are also getting a big reliability upgrade. Once the work is done, before the end of this year, new cable will be installed between the poles so that instead of having four individual wires running between the top of each pole a single stronger line will carry the power. This will also correct the problem of missing wire insulation that can be seen in the photo.

Personally I'd like to thank the DWP crew doing the job for being so careful around my favorite grapefruit tree grown from a seed my father found in his morning grapefruit in 1975. ■

Your Time is Valuable... We Get it!
Stop Waiting in Line! We'll handle all your Postal & Shipping Needs

We're Lovin' Our On Site FREE Parking!

We carry a full line of moving boxes and supplies, bubble wrap, furniture pads, tv boxes, mattress boxes, bike boxes and more...

Let us Walk You Through Your Holiday Shipping

- Experts in Packaging: glassware, computers, artwork, furniture, etc.
- Scan, Copy, Fax, Color Copies

BOX BROTHERS®

Atwater Village
 3154 Glendale
 323-661-4100

1920 Hillhurst Ave.
323-662-9000
 info@boxbrosla.com

SPECIALIZING IN FRAGILE & DELICATE ITEMS

Hollywood
 5629 Hollywood Blvd.
 323-464-9200

“Architecture & Beyond” at the Los Feliz Library

by *Brenda Kilbourne*

Ever wonder who designed the lovely school under the Shakespeare Bridge? If you attended the monthly *Architecture and Beyond (A&B)* presentations at the Los Feliz library you would have learned about the world famous architect John Lautner— described in both a great film by Bette Jane Cohen and in a lecture by Alan Hess.

Lautner was hired in 1960 by industrialist Kenneth Reiner to design a school for his children. The school, called MidTown, is now the Lycee International de Los Angeles— also known as “the French school.”

Within walking distance of the Shakespeare Bridge is an impressive array of examples of work by Schindler, Neutra, Wright, and Barton Phelps, who designed the Los Feliz library.

Since 2004, under the direction of Lynne Jewel, A&B has featured local historians, architects, scholars and other speakers; including Glen Creason, cartographer, Alan Hess, Palm Springs style, Neimeyer, Casa Modernist and John Lautner, Ann Sklar, Brown Acres: An Intimate History of the Los Angeles Sewers, and Dr. Robert Winter, author, Professor and Architectural Historian plus medieval cathedrals, Echo Park/Silver Lake Bohemian, lovely Mediterranean gardens, City Planning expert, L.A. River experts and even local realtor Richard Stanley have shared their expertise with audiences.

The Friends of the Los Feliz library, partnered with the Los Feliz Business Improvement District and Skylight Books, provide the program and author book signings. Library copies of the author’s books, the projector and refreshments are provided by the Friends of the Los Feliz library. Lectures begin at 6:45pm on the second Tuesday of each month. ■



Los Feliz Library

2013 Used Book Sale Dates

Jan. 26 Feb. 23

Mar. 23 Apr. 27

May 25 Jun. 22

Jul. 27 Aug. 24

Sept.28 Oct. 26

Nov. 23 Dec. 28

To have books picked up, call :

Angela Stewart

323-665-7840

or Brenda Kilbourne

323-665-3925

Baller Hardware

2505 Hyperion Ave.

Celebrating our 50th anniversary!



**BALLER
HARDWARE**

SINCE 1959

New store hours!

M-F 7:00-6:00

Sat 8:00-6:00

Sun 9:00-4:30

(323) 668-7420

Rescuing Our Recyclables / by *Charley Mims*

On our street we see four or five individuals come by, in either a car or with a shopping cart, on the night before the City picks up our recycling and trash. Each of these people goes through all of the blue containers on the street to pull out cans and bottles. Sometimes they even come onto our property to rifle through our containers. What many of us may not know is that the City helps to defray the costs of collecting and disposing of our trash, yard trimmings and recycling by selling the recyclables that we place in the blue containers.

Many people also do not know that it constitutes trespassing and theft when someone comes onto your private property to steal recyclables. Few of our neighbors know that it is also against the law for these so called "scavengers" to take recyclables from the blue containers when they are on the street awaiting pick up. A lot of folks think "scavenging" is a way for folks who are down and out to scratch out a living. What is not readily apparent is that this activity is organized with higher level bosses waiting with big trucks to take the cans and bottles from the small fish. This is an organized racket.

The Los Angeles Police are authorized to arrest these scavengers but, only when they personally witness the theft or if a Bureau of Sanitation supervisor personally witnesses the theft of items from the blue containers. The enforcement then requires that the City Attorney have one of his staff attorneys to prosecute this crime. As you might imagine, this is a cumbersome enforcement system that is hardly ever utilized. Staff from the Bureau of Sanitation is looking at recommendations to change the criminalization of this kind of theft from a misdemeanor to an infraction. Moving to an infraction system would allow officers to write "tickets". Changing the enforcement system would enable City staff to provide similar enforcement mechanisms as are used to collect traffic parking fines. The first violation might result in a fine of \$100.00 with a fine of \$200.00 for a second occurrence and \$300.00 for a third occurrence along with confiscation of the vehicle, if one is used on the "third strike". The infraction type of enforcement would be cost effective so it would actually be used.

Since this problem has existed for years, no baseline experience has been established for the amount of recyclables we place in the blue containers, so the City staff has not been able to make an accurate estimate of the revenue loss due to this widespread theft of resources. However, if my street is typical, the scavenger thieves pick the City clean every trash day. They leave only the lower value recyclables. This does not leave enough recyclables for defraying City costs of collection. If you don't want your rates to go up, support a more cost effective method of enforcing this law by writing to Councilman Tom LaBonge and the Mayor to demand action now. ■

Wishing all the residents
of the Franklin Hills

a Happy Holiday Season



ROSS CARTER & KAREN WEISS

RossCarter@ColdwellBanker.com

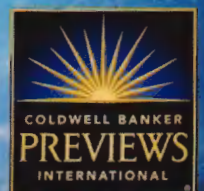
DRE #01190160

KarenWeiss@ColdwellBanker.com

DRE #00814309

(323)210-2380

Created by www.gycreativestudio.com



Cash Flow Building!



Hollywood Classic! Charming 12 Units circa 1929. Updated Electric, Copper Plumbing & Owner will consider a Trade!

Life at the Top!



Spectacular City to Ocean Views! Los Feliz Hills 2-Story 6+4 Fam Rm 24/7 Armed Patrol - Coming Soon!

FEATURED INVESTMENT



Offering 3 Units in the lovely Atwater Village Community. Ideal for Owner-User! Separate 2 Bedroom Owner's Unit, plus an additional 2 Bedroom rental unit, plus a separate Single Unit!

Actual yearly gross income of approximately \$36,360 per year. Buy at today's prices to enjoy in the years ahead. Don't miss this Excellent Owner-User Investment!

Dear Neighbors:

Please call us for any of your Real Estate needs! We offer Expert Sales and Professional Property Management Services, always at reasonable rates!

With over 36 years of Service, we do the job Right!



Tom LaBonge & Bruce Jay Eric Garcetti & Bruce Jay

We would like to thank Councilman Tom La Bonge and Councilman Eric Garcetti for their hard work and dedication in governing our Districts. They truly have our community at heart. And we are forever grateful for the High Honor they have awarded Bruce Jay Associates.

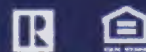
Thank you Tom and Eric!

Bruce Jay



Bruce Jay

bruce@brucejay.com
www.brucejay.com



1910 Hilhurst Avenue
Los Angeles, CA 90027
DRE # 01154748

323-660-3600

bruce jay
ASSOCIATES REAL ESTATE

PALERMO
RISTORANTE ITALIANO



1858 N. VERMONT AVE., LOS ANGELES, CA 90027

(323) 663-1178 • 663-1430 • Fax (323) 660-0284

HOURS: MON. 11AM - 10:30PM WED. THUR. SUN. 11AM - 12AM
FRI. & SAT. 11AM - 1AM

NOW OPEN SATURDAY & SUNDAY FOR BREAKFAST 9:00AM TO 2PM