



Issue n° 58

The Median Issue

Fall / Winter 2019

1995



CARING FOR OUR
COMMUNITY

2019





President's Message

Shirley Mims

With Autumn upon us and Winter approaching, change is in the air. As we transition to the next generation, more change is coming: Social media is a mainstay; more electronic communications and less printed paper are the norm; new board members are taking the helm with fresh ideas for the future of the Franklin Hills.

As with any community, new families move in, kids grow up, graduate high school and go to college. Parents grow old. Some move away. Others pass. We mourn the loss and celebrate the life of **Monique Harriton**, widow of Norm Harriton who founded the **Norman Harriton Community Garden** on the **Lycée International de Los Angeles (LILA)** campus. You can read a tribute to her in this issue (*page 11*).

Big and enduring changes over the decades have included the **Franklin Avenue Median** planting, creation of the **Shakespeare Bridge Garden**, development of the Norman Harriton Community Garden, increased safety awareness, public stairway clean ups and the **Lyric Avenue street repair**. Read further for additional articles on these projects.

We are blessed to have so many Franklin Hills neighbors who collectively donated over \$10,000 toward meeting the anonymous matching grant that will help to fund the median island maintenance for at least the next two years. We need to continue to raise funds for future maintenance of this median island which welcomes people to our neighborhood. Please continue to support this fundraising effort.

For over 20 years the FHRA has been working with neighbors and City officials to repair the badly damaged concrete streets. Just this year the FHRA was able to work with **Councilmember David Ryu** to repair the portion on Lyric Avenue otherwise known as the "great speed bump" (*page 8*).

LILA has been a strong supporter of the FHRA since they moved into the campus. They respond to neighbors' concerns and offer to help with other issues and community events. Over the years, they have hosted the **FHRA annual meetings** (*page 4*) and other community events ranging from our disaster preparedness drill to the **CPR class for neighbors** (*page 18*). We are grateful for campus assistant David Padilla for doing the layout for this issue of the Overview.

Even though we've experienced great changes over the years, our values remain consistent. We all want a safe, friendly and beautiful neighborhood. FHRA has remained a stalwart organization since it began over 30 years ago for the Franklin Hills community to address these issues. It is with your support that the FHRA has continued to have a strong voice in City Hall and with our neighbors.

The Overview is delivered by volunteers to every doorstep of the 1,900 households in the Franklin Hills area. If you are not already a member, we would appreciate you signing up. Dues are only \$20 per individual or \$35 per household. It's easier than ever to join, sign up online at www.franklinhills.org/join. For those who want to do a little more, please consider an extra donation to fund the **Franklin Avenue Median Island Maintenance**.

Stay up to date with **FHRA Alerts**. Email us at fhra@franklinhills.org to get on the list! We really appreciate your support and participation.



In This Issue:

President's Message	2
FHRA Annual Meeting	4
LAPD Update	5
Neighborhood Watch	5
Hyperion Working Group	6
Lyric Ave. Speed Bump Repair	8
Franklin Ave. Median Garden	9
Monique Breuil Harriton	11
Meditations on the Median Garden	12
Student Art Contest	13
Halloween on Camero Avenue	14
Around the Garden	15
Shakespeare Bridge Garden	16
FHRA CPR Class	18
Neighbors Rise to the Challenge	19
FHRA Membership Form	21
Hollyhock House	22
Neighborhood Contacts	23



Board Members

Chris Boutelle (*Chairman*)
Eric Frase
David McDonald (*Treasurer*)
Charley Mims
Shirley Mims (*President*)
Carole Nese
Elizabeth Richardson (*Secretary*)
Alix Soubiran
Melinda Taylor
Alison Wallace (*Vice-President*)

Contributors

SLO Jesse Aispuro
Chris Boutelle
Field Deputy Rachel Fox
Charley Mims
Shirley Mims
Suzanne Harriton McKeivitt
Rick Johnson
Tiffany Judkins
Carole Nese
Elizabeth Richardson
Melinda Taylor
Alison Wallace



CHI DYNASTY

EST. 1983



AUTHENTIC CHINESE
CUISINE WITH A
CONTEMPORARY FLAIR.

SERVING LOS FELIZ
FOR OVER 30 YEARS.
FAMILY OWNED
AND OPERATED



1813 HILLHURST AVE • FULL BAR • DINE-IN • TAKEOUT • DELIVERY

(323) 667-3388

ORDER ONLINE
CHIDYNASTY.COM

FAX 323-667-3393

FHRA Annual Meeting

April 26th, 2019

Shirley Mims

This year's annual meeting was held once again at Lycée International de Los Angeles (LILA). There was a large turnout of over 75 people who enjoyed pizza provided by Tomato Pie and salads from Say Cheese. The agenda was filled with formal talks by LILA's Head of School Michael Maniska, Fire Station 35 Captain Andrew Ruiz, LAPD Senior Lead Officers Lenny Davis and Jesse Aispuro and Captain Arturo Sandoval, Councilmember David Ryu's field deputy Rachel Fox, and Marshall High School principal Dr. Gary Garcia. Several members from the Los Feliz Neighborhood Council were present and available to talk with neighbors about their concerns. Prize drawings included gift certificates from Laemmle Theatres, Palermo Ristorante, and Disney DVDs.

FHRA board member Melinda Taylor announced the \$10,000 matching grant opportunity for the Franklin Avenue Median and received over \$4,000 in pledges on the spot. Rachel Fox was applauded when she told the audience of the Lyric Avenue street repair by Councilmember Ryu's office. FHRA Vice President Alison Wallace invited participants for the student art contest. The event continued on a high note honoring past board members in the board emeritus program.



FHRA BOARD EMERITI SPORTING CROWNS AND A TIARA (L:R) GEORGE GRACE, ADAM WEISMAN, BRUCE CARROLL



LAFD PRESENTATION TO FULL CROWD AT FHRA ANNUAL MEETING



FHRA BOARD MEMBER ALIX SOUBIRAN SHOWCASES THE NEW FHRA MERCHANDISE, INCLUDING BANDANAS, PINS, PENCILS, & MAGNETS

Jose de Jesus Sanchez
Gardening Services
Free Estimates

Sprinklers, New Lawns
Tree Trimming, Clean-up
Clean Gutters

818- 834- 0273

LAPD Update

Jesse Aispuro, Senior Lead Officer



Hello Everyone,

I want to begin by introducing myself. My name is **Officer Jesse Aispuro**. I graduated from UCLA with a degree in American Literature and Political Science (in what seems

like an eternity ago). I became a police officer 18 years ago and have been assigned to Northeast Division for over 16 years. I have the honor of having been selected as your **new Senior Lead Officer for the Silverlake and Franklin Hills area**. I have worked every area of Northeast Division over the years and even completed a tour in our undercover Vice Unit. As a result of this experience I feel I have a great understanding of our community. I am replacing the amazing **Lenny Davis**, and boy do I have some big shoes to fill! Officer Davis is a great asset to our community and I am very thankful for his mentoring and support. Not to worry, **Officer Davis has merely moved into the East Hollywood area**, so he will continue to be close by in case we need him.

Overall, as a Senior Lead Officer I am responsible for being a liaison between you and your police department. The more connected we are, the better we can serve you and help solve some of the crime trends affecting Franklin Hills. Although I work in your neighborhood and have insight into the crime trends, you are my eyes and ears in places we, as police officers, can never be.

By sharing insight and information with me, I can share this collective information with your police department in order to develop better crime fighting strategies. My primary goal is to strengthen our relationship and bond so we can make Franklin Hills as free from crime as possible.

In order to improve our relationship, I need to meet you, so I attend various types of community events, neighborhood council meetings, monitor social media, and gladly meet anyone in person for a friendly conversation.

Another personal goal of mine is to increase community involvement with the **Northeast Community Police Station**. In particular, I'd love to increase community participation in our LAPD Cadet, LAPD Junior Cadet, and sports programs. I know what you are thinking...and no your child does not have to want to be a police officer! These programs are a great safe way to increase their self-esteem, learn to work as a team, participate in activities that give back to the community, and just have fun! Prior to becoming a police officer, I was a middle school teacher for LAUSD, so I know how important it is to guide, protect, and develop our children. Participating in these programs will only further those goals and increase our bond as stakeholders in our community. Finally, I want to thank you and look forward to meeting you, whether at a meeting, over the phone, or my favorite, over coffee!



SLO OFFICERS, LENNY DAVIS (OUTGOING) AND JESSE AISPURO (INCOMING), TALKING WITH NEIGHBORS AFTER THE ANNUAL FHRA MEETING

Go Bruins!



Neighborhood Watch

Neighborhood Watch helps fight crime!!

To help keep our neighborhoods safe, join a Neighborhood Watch group on your street, report suspicious activity, and sign up for FHRAlerts at fhra@franklinhills.org.

About The Overview

The Overview is a semi-annual publication created and distributed by volunteer residents, neighbors, friends, and supporters of the Franklin Hills Residents Association, a non-profit 501(c)(3) organization

[@franklinhills](https://www.instagram.com/franklinhills)

[@franklin_hills](https://twitter.com/franklin_hills)

www.franklinhills.org

FHRA@franklinhills.org
323-908-6078 voicemail/fax

Editor – Elizabeth Richardson
Layout Designer – David Padilla

Ad Sales - Chris Boutelle
ads@franklinhills.org
323-309-3434

Hyperion Working Group

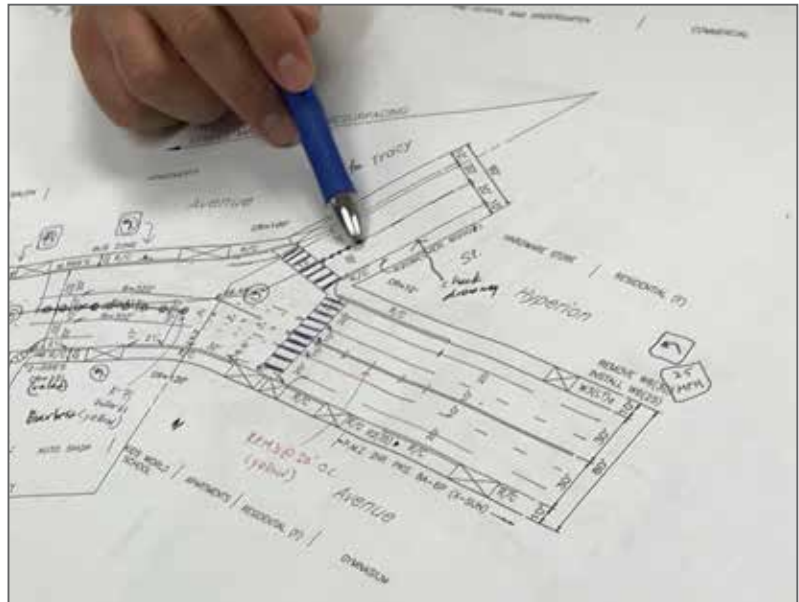
Next Steps—Summary from the final meeting

Rachel Fox, Field Deputy, Councilmember David Ryu

First of all, I would like to thank you all for taking the time to work together with DOT to bring traffic safety enhancements to Hyperion Avenue. I appreciate how thoughtful everyone was throughout the process and look forward to seeing a safer Hyperion corridor begin to take place as a result of your work.

Next Steps:

- **Raised pavement reflective markers** on curves 100 ft before, along, and after approach of Fountain Ave., Udell Court, & Tracy Street
- **Continuous solid white line** along curve to discourage lane change (see picture for example at 6th & Rampau)
- **Parked car edge line** along both sides of the Hyperion corridor (see: Bellevue in CD13 on page 7)
- **Speed feedback signs** – Already installed at Tracy (north and south-bound). CD4 has requested the signs be relocated.
- **Update signs to current design standards** at Hyperion and Fountain curve (chevrons).
- **High visibility crosswalk** at Griffith Park Blvd. & Hyperion. There is scheduled resurfacing in November on Hyperion between Rowena & Griffith Park Blvd. Striping of crosswalks should be done in conjunction with resurfacing.



PLANS FOR THE HYPERION AND TRACY INTERSECTION.

📷: RACHEL FOX

Long Term:

Hyperion and Tracy Intersection Improvements (see picture on right). We have solicited community and business buy-in for these changes. I am going to discuss with Baller and Tomato Pie. We welcome community members reaching out to the businesses as well.

- **Left-turn pocket on Hyperion** (northbound to Tracy), loss of metered parking spots
- **Install bollards on Hyperion**
- **Install bollards on Tracy** – prevent quick left from drivers turning right from Hyperion onto Tracy and into Tomato Pie lot.



6TH AND RIMPAU - CURVE LINE.

📷: RACHEL FOX / GOOGLE MAPS

(continued on page 7)

Volunteer Today!

We're always looking for new volunteers and interested board members.

Let us know at FHRA@franklinhills.org

MyLA311 App



Report potholes, pay a bill, request City services, or get information about city service. Download the app to your phone, or visit the website to find out more about 311.

<https://myla311.lacity.org>

(continued from page 6)

Timeline: **Bhuvan Bajai** (DOT) said design could be completed and workorders issued for these “short-term” items in the next weeks. Field implementation will likely take place in several months. The Council Office will do what we can to prioritize these improvements.



HYPERION EDGE LINE EXAMPLE / BELLEVUE IN CD 13
 ©: RACHEL FOX / GOOGLE MAPS

*Members of the working group included representatives from the Los Feliz Neighborhood Council, Franklin Hills Residents Association (FHRA), the Los Feliz Improvement Association, and the Silver Lake Neighborhood Council.



Simply, Classically Los Feliz 5160 Linwood Drive; Laughlin Park

Sited on a cul-de-sac at the highest point in celebrity-favored, gated Laughlin Park, the home enjoys wrap-around city, hills and Griffith Park views. All rooms are impressively-scaled. The floor plan is flawless. The original, elegant details are intact thanks to just two family owners over the past 90 years. Five bedrooms; pool; sunroom/den with Palladian windows; rathskeller. Unforgettable.

www.5160linwood.com Reduced to \$6,250,000

2 New Leases in the Los Feliz Estates

5250 Los Franciscos Way

3,430 sq. ft. 5 BR + 3.5 BA; pool; panoramic views; den; 3 fireplaces; small pet OK.

www.5250losfranciscos.com

\$8,000 per month



5186 Los Bonitos Way

3,547 sq. ft. 3 BR + 4 BA; pool; views; family room; den; office; luxuriously updated.

www.5186losbonitos.com

\$8,000 per month



Richard Stanley

#1 Agent - Coldwell Banker, Los Feliz
 Estates Director
 Architectural and Historic Properties

rstanley@richardstanleyrealtor.com
 213 300-4567 cell / voice mail



©2019 Coldwell Banker Real Estate LLC. Coldwell Banker is a registered trademark licensed to Coldwell Banker Real Estate LLC. An Equal Opportunity Company. Equal Housing Opportunity. Owned and operated by NRT LLC. All rights reserved. If your property is listed with another broker, this is not intended as a solicitation.
DRE# 00971211

Lyric Ave. Speed Bump Repair

Charley Mims

For almost twenty years neighbors have been complaining about the “speed bump” caused by a large pine tree’s roots uplifting the concrete street pavement near the top of the hill on Lyric Avenue. John Ferraro was our Councilman when the complaints first started, then we spent 14 years trying to get the tree removed and the street repaired while Tom LaBonge was our Councilman. Three years into Councilman David Ryu’s first term, he has succeeded in getting funding for concrete street repairs. Over a year ago Councilman Ryu patched together funding for an experimental concrete street repair project in Hancock Park. That proved to be successful. He was then able to get 7 million dollars placed into the City budget for concrete street repairs this year. One of the first projects funded was our own pine tree removal and street repair on Lyric Avenue.



COUNCIL DEPUTY RACHEL FOX PROUDLY
STANDS ON A SMOOTH NEW STREET!
📷: SHIRLEY MIMS



BUREAU OF STREET SERVICES CREW PLACING NEW CONCRETE
📷: BILL MOORE

As this project went forward, surveyors from the Bureau of Engineering identified the right of way boundaries of Lyric Avenue. It turned out that the Pine tree causing the problem was on City right of way and not on private property. That facilitated the City’s removal of the tree. Design engineers from the Bureau of Engineering carefully developed grades and alignment for the street repair. Next came the workers from the Bureau of Street Services who did the tree removal, the tree roots removals and the removals of the broken concrete street. They then compacted the natural soil, brought in and compacted crushed rock for base material, and finally placed new concrete and finished it for the new curbs and street pavement. And they did all of this work quickly and efficiently.



LARGE LOGS FROM THE PINE TREE BEING HAULED AWAY
📷: BILL MOORE

We thank all of those Franklin Hills Residents Association members who raised this issue over the last twenty years, but also Councilman Ryu, who listened to our concerns and worked to get money budgeted for concrete street repairs. Thanks also go to City Engineer Gary Lee Moore and his surveyors and designers, and to Director Adel Hagekhalil for the efficient and quality work his crews from the Bureau of Street Services did in actually doing the pavement removal and replacement. This was truly a team effort from neighbors to City forces. Thanks to one and all!

And as a footnote: There is now money in the City budget for concrete street repair work for the first time in over 50 years. Director Hagekhalil has directed his managers to develop an assessment of the need for further concrete street repairs not only in the Franklin Hills, but throughout Los Angeles. So look forward to more of our damaged concrete streets being repaired in the future.



Franklin Ave. Median Garden Part I

Elizabeth Richardson

Doesn't the Franklin Avenue Median Garden look wonderful? Hasn't it always been this way? Answer: NO.

27 years ago, back in 1992, it was all blacktop with weeds growing through the cracks except for one lone palm tree. Worse still, Franklin Avenue's median had been 'streamlined' over the years several times to accommodate increasing vehicular speeds.

The recently formed Franklin Hills Residents Association thought something could be done to change it from an eyesore to an amenity. After all, it was the westward entrance into the Franklin Hills, and it was vital to slow down the traffic. Records at the time show "The Franklin Hills Residents Association proposes to beautify the Franklin Avenue Median by landscaping it with drought-tolerant plants and trees. ...The City of Los Angeles encourages private groups to undertake the beautification of public property by way of the 'Adopt-a-Median' program. Cost estimates for plants and sprinkler system \$7,000-\$10,000."

It took a while to get it done. City bureaucracies don't move quickly. Money had to be raised. Grants had to be written. The neighborhood's support was both vocal and financial. Armida Bolton generously put the fund over the top with a contribution of \$5,000 in memory of her husband, Donald. (See the plaque on the rock in the middle of the garden).

(continued on page 10)



REMOVING CONCRETE FROM THE SLOPE, 1995

©: MELINDA TAYLOR



Celebrating 60 Years!

*Thank you Franklin Hills,
Los Feliz, Silver Lake, & Atwater Village!
For great holiday gift ideas visit our website.
Please like us on Facebook.*

**HOME IMPROVEMENT • TOOLS
PAINT • SCREENS • KEYS**

323-668-7420
2505 HYPERION AVE • BALLERHARDWARE.COM

(continued from page 9)

An FHRA board member and architect, Riccardo Accorsi spearheaded the project's design, imagining the space and creating hand drawn perspectives showing what the space might look like when planted. As the project looked like it was going to happen, someone suggested he call neighbor and landscape architect, Melinda Taylor, who took the group's concept and developed it.

The Median Garden was officially dedicated by Councilman John Ferraro on December 14, 1995.

The agreement with the city was this: The city retained ownership of the property. FHRA would maintain it and pay for the water. This system worked for the first few years. Several times a year, board members and volunteers would put out cones to slow the traffic so they could safely trim and weed the garden.



LOOKING TOWARD THE BRIDGE, 1995

📷: MELINDA TAYLOR



PREPARING FOR DEMOLITION, 1995

📷: MELINDA TAYLOR

But times change. People move away. It was hard to keep the momentum going. So the Board hired a series of gardeners. They kept the plants alive (mostly). The Board saw to the repair of the sprinkler system. By 2016, the garden was looking pretty sad. The sprinkler system needed an overhaul. Inexperienced gardeners had 'box-trimmed' plants that should have been allowed to spread their branches.

Once again, the FHRA board turned to Melinda for help. She surveyed the garden and said all was not lost. The existing plants would respond well to proper pruning. Some plants needed to be replaced. A few recently available new ones were added. All desperately needed site specific nutrition. The irrigation system needed repair. Bottom line: the garden needed better care every month. Melinda Taylor volunteered to restore the median garden at her own expense.

The garden responded almost immediately. Melinda and her team of experienced gardeners did wonders. The garden was beautiful. But could this be sustained? (See Part 2, "Neighbors Rise to the Challenge" on page 19)



Monique Breuil Harriton

October 31, 1923—July 20, 2019

Chris Boutelle & Suzanne Harriton McKevitt

Monique Breuil was born in a small town in northern France and educated in Paris before moving with her parents to Amiens, France. There, in 1945, she worked as a translator and helped armed forces Private Norman Harriton, who had written a short article advocating better Franco-American relations, prepare a piece for a local paper. Soon thereafter, they fell in love.

After the war, Monique returned to Paris to complete her studies at the Sorbonne while Norman attended UCLA. She managed to be awarded a scholarship to Carleton College in Minnesota and worked in the college library, finding it a perfect job for a bibliophile. Norman would often visit her in Minnesota.

Once they had both finished college, Monique and Norman married in Los Angeles in 1948. She continued her beloved vocation as a college librarian at LACC, ELAC, and Rio Hondo junior colleges. Monique loved so many things about Los Angeles: its beauty, its diversity, its contradictions, and its vibrant cultural and civic life. After she and Norman moved to Ronda Vista Drive in Franklin Hills, she marveled at being able to grow exotic fruit trees including figs, persimmons, and guavas in her garden.

Throughout her life she continued to read voraciously with particular attention to the topics of the brain, the body, women's health and reproductive freedom and struggle for equality throughout the world. She was an ardent feminist who firmly believed in women's rights in all aspects of life.

Monique Harriton was a beloved member of our community and at 95 years old continued walks in the neighborhood and tending her garden. I especially enjoyed the rhododendrons that graced the front of her home. She came to every FHRA annual meeting and especially the ones at LILA where she could be in the library where she often volunteered and where she could be close to the Norman Harriton Community Garden that her late husband had founded on campus in 2001. Her contributions to the neighborhood will not soon be forgotten.

Monique is survived by her son Michael, her daughter Suzanne McKevitt, four grandchildren and two great grandchildren.



Monique Breuil Harriton



October 31, 1923 - July 20, 2019

Meditations on the Median

A reflection by its creator

Melinda Taylor

I took a trip down the 5 freeway in October to visit the native plant nursery Tree of Life. I went to hear founder Mike Evans speak about mulches in California native gardens, and to pick up some plants for the Median Garden. Early October is when we shop for California native plants, and late October is when we'll plant them. The same time frame is good for you and your Franklin Hills home garden.

My route went south to Mission Viejo and on to Highway 74, Ortega Highway. Driving through housing developments in Mission Viejo I passed median after median, planted with perfectly sensible plant selections, but they saddened me. Why no California natives? Why so dull a composition of plants? The medium greens of their foliage colors were discordant with the surrounding California hills. The flower colors of the plantings seemed harsh.

I found myself eager to get past them, and out into the native plant environment of Ortega Highway. I began to muse on the Franklin Median Garden, and to realize that our median garden is unusual. It's composed in large part of California native plants. It's a garden where native plants and humans live together in peace. And humans don't have to drive a long way out into the countryside to see them.

Here's what else I thought about: In the center of a busy street that is like an urban river, linking one area of the city with another, this long, skinny space, a "throw-away" space occurred by necessity to resolve the elevation difference between street and curb on the uphill side of the street and street and curb elevations on the downhill side.

We took this long, skinny space and created a foil to the urban car river that is Franklin Avenue: An urban island of sorts. The plant community living on that island delights us, calms us, gives hope to the weary and harried on their journey.

I appreciate the Median Garden both for what it is, and for what it isn't. It isn't cute. It isn't "gardeny". It isn't planted with garden-variety annuals that provide "color". It isn't overplanted. It doesn't strive to attract human attention

through the use of "accents". It isn't bonded to the human world of commerce, with signs enumerating its many financial supporters, or championing the political or social positions of its supporters, or even championing the education of its supporters through use of plant identification signs.

It is mute, but it speaks to me. It is simple, but profoundly elegant. It is a practical solution that is also a place with a distinct presence. In the neighborhood, it is a marker that says, "You are here, and we are here with you". It co-exists with us, and many of us delight in this.

We took this long, skinny space and created an urban island of sorts. The plant community living on that island delights us, calms us, gives hope to the weary and harried on their journey.

Many landscape projects begin with these ideas in mind, but few mature to this realization. The odds for success are long. Many fail due to oversights in the design phase or to poor maintenance or to a change in project management.

We are lucky in having avoided these pitfalls. The

Franklin Hills Residents Association has maintained the Median Garden for 24 years. We have learned, through experience, what the garden needs, and how to answer those needs. We've determined its value to our community both broadly and specifically, as we've determined our financial commitment to it. Due to the generosity of our Median Garden un-named donor, and the generous response of you, the Franklin Hills community, we can welcome new plants into the garden this Fall, watch them grow over the Winter, and enjoy their blooms in Spring, secure in our knowledge of the Median Garden's on-going care through 2020.



MATILIJIA POPPY FROM
MEDIAN GARDEN
MELINDA TAYLOR

Student Art Contest

Winners Announced

Alison Wallace

Henri Matisse wrote, “Creativity takes courage.” This spring, the **Franklin Hills Residents Association** honored two students for both their creativity and courage.

Kseniia Sorokina and **Charlie Marcus** come from different backgrounds but share a love of art and our community.

Kseniia, also known as Xenia, moved to the United States just a year ago from Russia and attends John Marshall High School. Both her grandparents were professional painters. Upon first seeing the Shakespeare Bridge, she was amazed by its unique, beautiful architecture and took several pictures. When she heard of the art contest, Xenia knew exactly which perspective she would choose.

With the two small waltzing dancers added to her drawing, Xenia intended three representations. First, they signify a reminder to the viewer of the year of the bridge construction, 1926. Second, they are modeled on her mother and father, who also love the Shakespeare bridge. The waltzing couple also signify Xenia’s love of dance. When in Russia, she danced for nine years. Her ensemble performed in St. Petersburg, Latvia, Poland and Germany.

Charlie, by contrast, has lived in Franklin Hills his entire life and has no plans to leave any time soon. Although he began drawing early in elementary school, he took a more focused interest in middle school and now high school. His other interests include playing the piano and playing on the Hamilton High School Junior Varsity Baseball team. He enjoys the Franklin Hills neighborhood views and accessibility to his favorite activities and restaurants such as Tomato Pie Pizza Joint and Magpies Soft Serve.

Both Xenia and Charlie continue to foster their art interests by recently attending art classes outside of their traditional schools. They also share a love and appreciation of the Franklin Hills community and participate



XENIA SOROKINA & CERTIFICATE OF RECOGNITION FROM COUNCILMEMBER DAVID RYU



CHARLIE MARCUS & CERTIFICATE OF RECOGNITION FROM COUNCILMEMBER RYU

in volunteer activities. When they received their awards at a ceremony in July, each attended with full family support and representation. At the event, it was noted how challenging it can be for a person of any age to jump outside of their comfort zone and put themselves into the public arena. We applaud both award winners for their courage in allowing us to see their views of this special neighborhood.



CHARLIE MARCUS – THE SHAKESPEARE BRIDGE



XENIA SOROKINA – THE SHAKESPEARE BRIDGE

Halloween on Camero Avenue

It takes a 'neighborhood'

Elizabeth Richardson

If, last Halloween, you didn't drive down Camero between Talmadge and Myra, you missed a fright, oops, sight! In 2018 one statistically inclined neighbor counted over 300 kids and parents at the door. Clearly the word has gone around that this block of Camero is the place to see fantastic decorations and to collect a wide variety of treats. (Unfortunately, the Overview had to go to the printer before the 2019 number of visitors was released.)

Franklin Hills is known for the creativity and imagination of those who call it home. Halloween is the perfect time to let it all hang out. The neighbors along this part of Camero Avenue are no exception and between progressive dinners, back yard cookouts, and holiday decorations, they have over the years become a pretty tight group of friends. Rumor has it that other blocks are similarly tight. If your block has a story to tell, let us know.



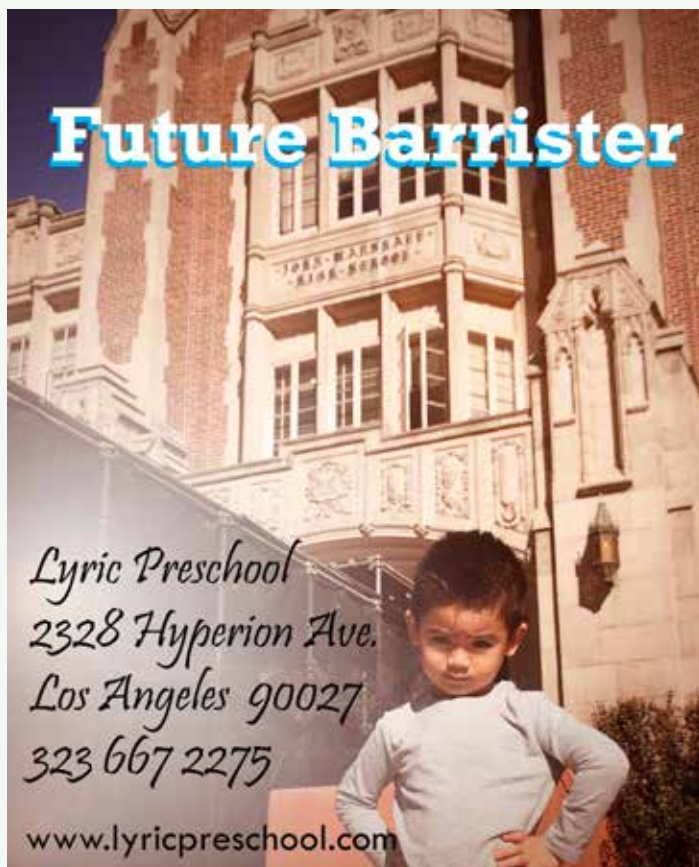
BEWARE ALL YE WHO ENTER HERE

📷: A NEIGHBOR



AN UNUSUAL VISITOR TO CAMERO AVENUE

📷: A NEIGHBOR



Future Barrister

Lyric Preschool
2328 Hyperion Ave.
Los Angeles 90027
323 667 2275

www.lyricpreschool.com

Around the Garden

Tiffany Judkins

SEE ALL THE DIFFERENT THINGS THAT THE NEIGHBORS ARE GROWING AT THE NORM HARRITON COMMUNITY GARDEN



Hi·TECH

AUTOMOTIVE

AUTO REPAIR • TIRES • SHOCKS • ALIGNMENT

4000 Fountain Avenue

Los Angeles, CA 90029

T: 323.661.2788

www.hitechsilverlake.com

electric^{AVE.}

servicing hybrid and
alternative vehicles

2300 hyperion ave, silver lake

www.electricsilverlake.com

323.665.8807

Shakespeare Bridge Garden

Finally!

Shirley Mims

The **Shakespeare Bridge Garden** is finally complete. Again! As you might recall from previous articles, the garden had fallen into disrepair several times. It first happened when an emergency sewer repair was needed and the garden was dug up. The second and third times it happened when a trash truck hit the backflow preventer device, two different times, ultimately rendering the water system unusable. **Volunteers** dug up the roses and put them in pots which were cared for by neighbors until they could be replanted.

Engineering drew up the plans including a new retaining wall to hold up the slope that was cut away for the emergency repair. **Sanitation** rebuilt the garden with the retaining wall, new water system and plants. The roses were replanted along with new ones donated by Monon residents. Sanitation also provided the commemorative plaque. It displays the **FHRA logo** which was originally designed by Franklin Hills neighbor **Eugene Cheltenham**. He helped to

(continued on page 17)



MONON NEIGHBORS POSE AFTER CLEANING-UP THE SHAKESPEARE BRIDGE GARDEN ON JULY 13TH

📷: LOUISE VOYAZIS



MRS. GIZELLE G. JAMES PLAYED MANDOLIN BETWEEN THE OFFICIAL UNVEILING AND THE STUDENT ART CONTEST PRESENTATION

📷: SHIRLEY MIMS

You have PC expert in Franklin Hills!

Michael Martin

- Small business & In home service
- Organize & access your data everywhere: on your PC, smartphone, tablet or in the cloud.
- Migrate your data to a new computer.
- Wi-fi & networking issues.
- iPhone, iPad, Android, tablets and more.
- Remote support available.
- Reasonable rates.
- House calls accepted.
- Plain, non-technical English.
- 20 years of experience.
- Franklin Hills resident since 2002



(323) 810-6453 www.michaelmartin.net michael@michaelmartin.net

(continued from page 16)

make sure the fine lines and details would show up in the bronze cast. The City crew, who restored the garden, work out of **Lopez Canyon**. They mounted the plaque on a native boulder from their yard as a symbol of tying together our two communities.



APPLAUDING THE UNVEILING OF THE PLAQUE.
 FRONT: CONTEST WINNERS XENIA SOROKINA AND CHARLIE MARCUS, & FHRA BOARD MEMBER CHARLEY MIMS. BACK: COUNCILMEMBER DAVID RYU, GILBERT TASCIONE (SANITATION), DIRECTOR ADEL HAGEKHALIL (STREET SERVICES), FHRA PRESIDENT SHIRLEY MIMS, GARDEN DESIGNER & PRINCIPAL CIVIL ENGINEER RYAN TOLES (ENGINEERING), AND SUPERINTENDENT JAMES GREENFIELD (SANITATION).

📷:MICK BROWN

On July 25th, neighbors celebrated with City dignitaries to officially unveil the commemorative plaque at the garden. We also celebrated the winners of the student art contest (see “Student Art Contest” on page 13). A few weeks earlier, several local residents helped to clean up the area with **Councilmember Ryu’s office** hauling out the bags. Enjoy the photos from this long-time effort between FHRA, neighbors, and City of Los Angeles agencies.



EUGENE CHELTENHAM (DESIGNER OF FHRA LOGO) & CHRIS BOUTELLE (FHRA BOARD MEMBER) SPORTING THEIR FHRA T-SHIRTS

📷:SHIRLEY MIMS

FHRA CPR Class

Learning First Aid Basics

Carole Nese

The FHRA sponsored a CPR class for the neighborhood on June 11th. The International School of Los Angeles / Lycée International de Los Angeles (LILA) graciously donated their library space for the event. FHRA's Emergency & Safety Committee co-chairs, Carole Nese and Shirley Mims, organized the gathering as an adjunct to the **Map Your Neighborhood Earthquake Preparedness program**. Mike Hain, American Red Cross certified CPR and First Aid instructor, taught the life-saving skills to over a dozen residents and neighbors.

We wish to thank the International School of Los Angeles for their kindness and generosity.

📷: SHIRLEY MIMS



FHRA CPR CLASS



**JOIN US NEXT TIME TO LEARN
FIRST AID & HOW TO SAVE A LIFE!**

Franklin Hills Stair Clean Up

Thanks to all who joined for coffee, community and sweeping!

Sunday, November 3rd, 2019



Sponsored by the Franklin Hills Residents Association



Neighbors Rise to the Challenge

Franklin Ave. Median Fund Challenge — Part II

Elizabeth Richardson



THE WEST END OF THE MEDIAN IN 2006, 11 YEARS AFTER ITS FIRST PLANTING

📷: MELINDA TAYLOR

After over a year of paying for the Median garden maintenance, **Melinda Taylor** could not continue to pay it out of her own pocket. But then, something amazing happened. Out of the blue, a **Franklin Hills resident offered to give \$10,000 to the Franklin Hills Residents Association** to set up a separate fund for the garden's maintenance. Of course there were strings. The FHRA board had to raise an equal amount and put those monies into the fund. The donor wished to remain anonymous. The Board accepted the proposal.

But why had the donor come forward? The donor said they had been away for a while. When they drove home by the Median, they were astounded to see how beautiful and luxuriant the garden had become. What had happened? Melinda Taylor and her team of experienced gardeners had happened. Expert pruning. Quality mulch. An updated watering system. Some new plants. It was almost a complete transformation.

The donor knew better care costs more and while FHRA had been able to support the maintenance before, it wasn't going to be able to continue without special help. That was why the donor offered a challenge grant. Maintaining the garden had to be important to the community not just to the donor. **The deadline to meet the challenge was May 31st.**

(continued on page 20)

Tara Casares, Agent
Insurance Lic#: OK06933
1670 Hillhurst Avenue #102
Los Angeles, CA 90027
Bus: 323-522-3066

They matter to me.

I get it. Your home and car are more than just things. They're where you make your memories and they deserve the right protection. It's why I'm here.
LET'S TALK TODAY.

State Farm®

State Farm Mutual Automobile Insurance Company
State Farm Fire and Casualty Company
Bloomington, IL

1706814

(continued from page 19)

And did the community ever respond! Gifts ranging from \$25 to several thousand came in quickly. **One resident promised to send in \$50 every month.** Another promised to give **\$500 per year** for the next five years. **LILA School** stepped up, thanks to **John Fleck**, and contributed \$2,500 towards the goal. Since then a bunch more neighbors have given online.

Can we rest easy now? No.

The challenge grant may be over but the real challenge will be to fund the maintenance every year. A gentle reminder will go out on our monthly **FHRA alert email** featuring one of the garden's plants complete with a picture and a brief description. And every spring, you can count on a special solicitation. The Median now even has its own page on the FHRA website, www.franklinhills.org/median. Of course, there's a donation button there too. Please use it!



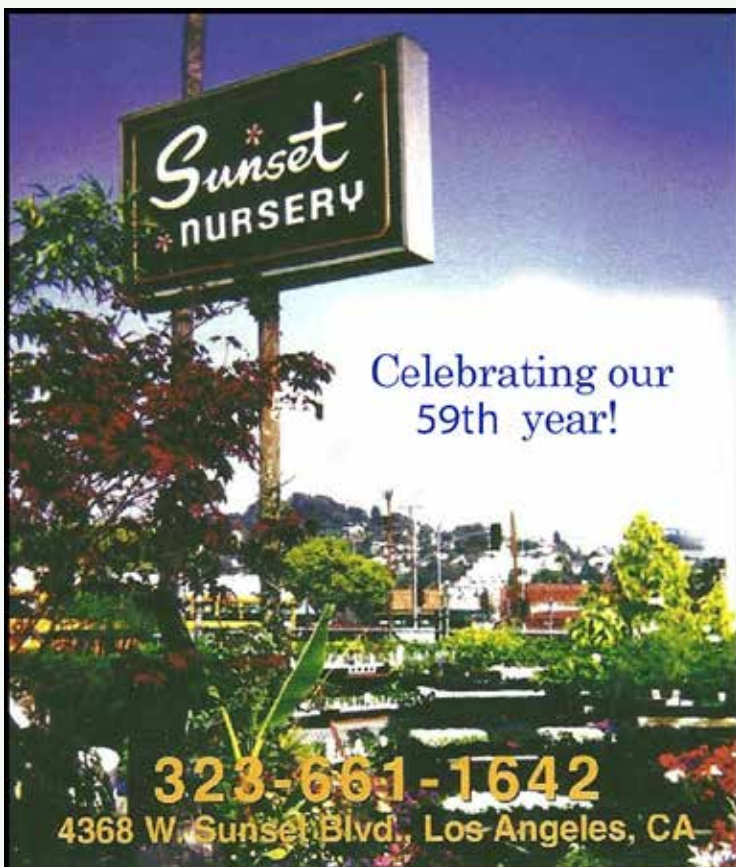
THE WEST END OF THE MEDIAN IN 2006, 11 YEARS AFTER ITS FIRST PLANTING

📷: MELINDA TAYLOR



SHAKESPEARE BRIDGE INFORMATIONAL SIGN, PRESENT DAY

📷: ELIZABETH RICHARDSON



THE EAST END OF THE MEDIAN IN 2006, 11 YEARS AFTER ITS FIRST PLANTING

📷: MELINDA TAYLOR



FRANKLINHILLS.ORG

FHRA IS SUPPORTED ENTIRELY BY YOUR MEMBERSHIP DUES AND GENEROUS DONATIONS

All Donations and Membership Dues are Tax Deductible
FHRA is an IRS 501(c)(3) Tax Exempt Organization

I am interested in:

- Beautification
- Neighborhood Watch
- Disaster Preparation/Safety
- Traffic
- Youth involvement
- Legal
- Franklin Avenue Median
- Stairway cleaning
- Planning/Zoning
- Historic preservation
- Overview delivery
- School relations
- Membership
- Community gardens
- Holiday decorations
- AirBNB
- Prospect Studios relations
- Other

NAME

ADDRESS

CITY

STATE, ZIP

EMAIL

PHONE

MEMBERSHIP AND DONATIONS

Yearly membership dues are \$20 per person or \$35 per household.

To become a member, renew a membership, or make a donation, visit www.franklinhills.org/join

Or you can send a check to:
FHRA P.O. BOX 29122
Los Angeles, Ca. 90029-0122

Enclosed membership due is: \$20
 \$35

Enclosed donation is: \$ _____

Contact Voice Mail: (323) 908-6078 | FHRA@FranklinHills.org

Season's Greetings & Best Wishes in 2020



Colin Hoffmeister

DRE 01921784 | 310.435.4206 | CHoffmeister@msn.com

Leverage my 26 years of experience.
Realtor, Contractor, Homeowner, Real Estate Investor

kw LOS FELIZ
KELLER WILLIAMS REALTY

Hollyhock House

Hidden in Plain Sight

Rick Johnson



ART GLASS FROM THE MASTER BEDROOM, WITH A VIEW INTO THE INNER COURTYARD.

Frank Lloyd Wright's Hollyhock House was built for oil heiress Aline Barnsdall between 1919 and 1921. It lies just minutes from Franklin Hills, so it's surprising how many of our neighbors have never heard of it. For decades it has been the best-kept secret in Los Angeles. This writer has been a volunteer docent at Hollyhock since 2014, and it has been a privilege to share the house with visitors from around the world, since its reopening in 2015 after a major, four-year restoration.

Aline Barnsdall purchased 36 acres near Hollywood Blvd. and Vermont in 1919 known as Olive Hill and commissioned Wright to build a large Theater Arts Complex. Unfortunately, most of her vision was never realized. When Aline fired Wright in 1921, only her personal residence and two guesthouses were near completion. Barnsdall was so frustrated that she began negotiations with Los Angeles to give them the property. In 1927, the city finally agreed to take 12 of the 36 acres, including only the main residence and one guesthouse, on the hill we now know as Barnsdall Art Park.

Hollyhock House was the first residence built by Frank Lloyd Wright in Los Angeles. He made extensive use of decorative cast concrete, departing radically from his famed Prairie Style homes. **Hollyhock was recently designated a UNESCO World Heritage Site**, recognizing its importance as the beginning of the modernist architecture movement in Los Angeles. Rudolph Schindler, the project manager for Hollyhock, and Richard Neutra were both influenced by Wright's use of open interior living spaces, and his indoor/outdoor living concepts.

There has never been a better time to visit Hollyhock House since it reopened in 2015. After the World Heritage designation at the end of July, more of the house has been opened to visitors. **Regular hours are from 11:00 AM to 4:00 PM Thursdays through Sunday.** Tours are self-guided, but there are docents available in the house to tell you about the house, and answer your questions. Interior self-guided tours are \$7 for adults, \$3 for seniors and students. Tickets and more information are available online at Barnsdall.org, or at the Visitor's Center.




INNER COURTYARD: VIEW OF THE BIFOLD DOORS, STAIRS TO THE ROOF TERRACES, CAST CONCRETE FRIEZE & ROOF FINIALS.  ALL: RICK JOHNSON

(continued on page 23)

(continued from page 22)



SOUTH GARDEN TERRACES WITH A VIEW OF THE CAST CONCRETE FRIEZE AROUND THE CENTER, BEDROOMS WITH ART-GLASS SUNPORCH BELOW, AND DECK ABOVE.  RICK JOHNSON

Exterior tours are also available Thursday through Sunday at 11:15, 12:00, and 12:45 for an additional cost of \$7. These 25-minute tours are docent-led and offer a great introduction to the history and architecture of the house. Purchase tickets at Barnsdall.org or at the Visitor's Center. There is a limit of 10 guests on each tour, so it's best to buy in advance for your first choice of date and time.

Hour-long Docent-led tours only on Tuesdays and Wednesdays currently allow the most access to the house; visitors see areas not currently open on self-guided days. Tours at 11:00 and 12:30 sell out quickly with a maximum of 10 guests each, and must be reserved in advance online. Visitors see exteriors, main rooms, as well as the study, breakfast room, the south wing with gallery space, the bedrooms and courtyard.

Plan to visit us at Hollyhock House soon!



Thank our Advertisers!

When you visit any of the businesses who advertise in the *Overview*, please be sure to thank them for their support of the Franklin Hills Residents Association. Advertising helps to pay for this free publication for all the residents of the Franklin Hills.

Please be sure to tell our advertisers that you saw their ad in the **Franklin Hills Overview**.

Neighborhood Contacts

City of LA Contacts	
City Services	
	☎ 311
	✉ 311@lacity.org
Hours M-F	7am-7pm
Hours Sat - Sun	8:30 am-4:45 pm
Animal Services	☎ (888) 452-7381
Dead Animal Pickup (Sanitation)	extension 2
Lost Animals	extension 2
Barking Dogs	extension 3
Building & Safety Violations	☎ (213) 473-3231
Parking Enforcement (DOT)	☎ (213) 485-4184
Council District 4	
	☎ (213) 473-7004
Councilmember David E. Ryu (CD4)	✉ david.ryu@lacity.org
	☎ (213) 473-2311
Field Deputy	☎ (323) 957-6415
Rachel Fox	✉ rachel.fox@lacity.org
Graffiti Removal	☎ 311
Homeless Services	☎ 211
LA County Info Line	☎ 211
Mayor Eric Garcetti, City of Los Angeles	
Central Area Representative	☎ (213) 978-0430
Angie Aramayo	✉ angie.aramayo@lacity.org
Neighborhood Prosecutor	☎ (213) 978-2230 or (323) 561-3403
Gabrielle Taylor	✉ gabrielle.taylor@lacity.org
Utilities	
Dig Alert (call before digging)	☎ 811
LADWP	☎ 1-800-DIAL-DWP (1-800-342-5397)
SoCalGas (inc. leak reporting)	☎ 1-800-427-2200
Sanitation	
Trash Bin Replacement	☎ (800) 773-2489x1
Bulky Item Removal	☎ (800) 773-2489x1
Community Contacts	
FHRA	☎ (323) 908-6078
	✉ FHRA@franklinhills.org
LAUSD	
LAUSD School Police	☎ (213) 625-6631
Marshall High School - Main#	☎ (323) 671-1400
King Middle School - Main#	☎ (323) 644-6700
Los Feliz Public Library	☎ (323) 913-4710
Lycée International de Los Angeles (LILA)	☎ (323) 665-4526
	✉ lofeliz@lilaschool.com
Prospect Studios	
Janet Campus, Production Services	☎ (323) 671-4022
Prospect Studio Security Shift Leader	☎ (323) 203-5201
Juan Lomeli	☎ (818) 560-1520
Security Operations Program Manager	
Emergency Services	
LAFD	
Fire Department: Emergency	☎ 911
Non-Emergency	☎ (213) 485-6185
Fire Station 35: 1601 Hillhurst	☎ (213) 485-6235
Fire Station 56: 2759 Rowena	☎ (213) 485-6256
Poison Control	☎ (800) 222-1222
LAPD	
Police Department, Emergency	☎ 911
Police Department, Northeast Division.	☎ (323) 561-3211
	☎ (213) 793-0763
Sr. Lead Officer Jesse Aispuro	✉ 36072@lapd.online
	☎ (213) 793-0762
Sr. Lead Officer Lenny Davis	✉ 26028@lapd.online
Non-Emergency	☎ (877) ASK-LAPD or (877) 275-5273
Gang Problems	☎ (323) 561-3335
Noise Enforcement	☎ (213) 996-1251
Rape Hotline	☎ (310) 392-8381
Restraining Orders	✉ www.lapdonline.org

SPECIALIZING IN THE FRANKLIN HILLS FOR OVER 25 YEARS

Recently sold in the neighborhood:



4355
Russell Avenue
\$1,402,880

4202
Los Nietos Drive
\$1,400,000

2425
Claremont
Avenue
\$1,298,500

ROSS CARTER

(323) 376-2462

RossCarter@ColdwellBanker.com

RossCarterProperties.com | DRE#01190160



RESIDENTIAL BROKERAGE

PALERMO

RISTORANTE ITALIANO



1858 N. VERMONT AVE., LOS ANGELES, CA 90027

(323) 663-1178 • 663-1430 • Fax (323) 660-0284

HOURS: MON. 11AM - 10:30PM WED. THUR. SUN. 11AM - 12AM

FRI. & SAT. 11AM - 1AM

NOW OPEN SATURDAY & SUNDAY FOR BREAKFAST 9:00AM TO 2PM